

VISITOR GUIDE

15TH - 16TH
MARCH
ROYAL HALL OF INDUSTRIES

FEATURING:



HEADLINE SPONSOR





Construction Productivity Software

Build and collaborate from anywhere with real-time access to plans, defect lists, documents and daily reports.

Build better, together.



To get started for free trial, visit: www.plangrid.com





THE LORD MAYOR OF SYDNEY
CLOVER MOORE

Message from the Lord Mayor of Sydney

On behalf of the City of Sydney, I am pleased to support *Sydney Build 2018*.

I congratulate the organisers of the Sydney Build exhibition on a highly successful program and structure. The responses from last year's attendees and exhibitors indicate the event is welcoming and lively with engaging displays, workshops and presentations.

This year's Expo looks to be even bigger, providing significant networking and business development opportunities, as well as education and training on the future of the construction industry.

The 'Women in Construction Morning Tea' on 15 March looks to be a wonderful networking opportunity and panel discussion focussing on women in the industry; their achievements; struggles, and thoughts on the future of the industry.

I wish all the visitors, speakers and exhibitors of *Sydney Build 2018* an enjoyable and successful Expo.

Yours sincerely

Clover Moore
Lord Mayor of Sydney

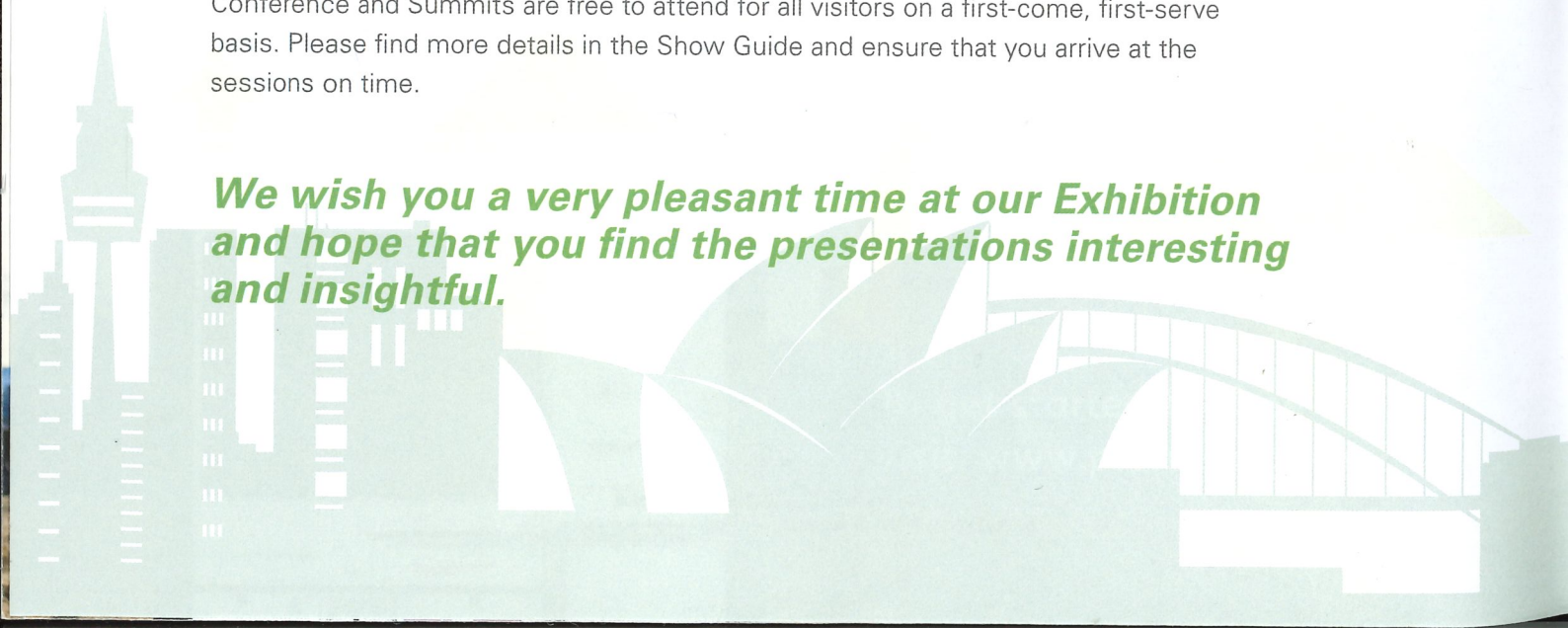
WELCOME TO SYDNEY BUILD 2018

This year's exhibition will cover many current topics in Sydney and Australia's construction industry. With the BIM & Digital Construction Summit and Future Sydney Summit taking centre stage across our two-day event, we hope to provide the best platform for industry professionals to get together and discuss past, present and future projects. Presentation sessions will address a wide range of subjects, including project management, pre-fab Passive House, future-proofing, latest construction software development and transport infrastructure.

Notably, the 2018 Speaker Programme welcomes industry experts from Sydney Water, Northwest Rapid Transit, Richard Crookes Constructions, AECOM, Icon Co, Colliers International Australia, DesignInc Sydney, Warren & Mahoney, Autodesk, Fulton Trotter Architects and many more. We thank Councillor Craig Chung, John Fildissis, Mark Simister, Jo Gillies and Pedram Danesh-Mand for agreeing to take on the roles of Conference Chair.

Conference and Summits are free to attend for all visitors on a first-come, first-serve basis. Please find more details in the Show Guide and ensure that you arrive at the sessions on time.

We wish you a very pleasant time at our Exhibition and hope that you find the presentations interesting and insightful.



SHOW INFORMATION

Opening Times

15TH MARCH
(THURSDAY)

16RD MARCH
(FRIDAY)

09:30 – 17:30

09:30 – 16:00

Admission

All attendees are requested to wear their name badges at all times for security purposes. There is no admission fee.

Canvassing

Canvassing and distribution of flyers are not permitted in the exhibition area unless organized with the organizer prior the event. Anyone found doing so will be removed immediately.

Conduct

Persons under the age of 18 years are the direct responsibility of the parent/guardian and must not be served alcohol under any circumstances.

Disabled Facilities

Disabled parking for patrons is available in the Entertainment Quarter multi-deck car park. Level access is available from the car park to the Royal Hall of Industries and the Hordern Pavilion; appropriate toilet facilities are located in both venues.

First Aid

First Aid trained personnel can be found onsite at the green room. All accidents must be reported immediately to a PVM representative.

The nearest Hospital to PVM venues are:

St Vincent's Hospital, Sydney
390 Victoria St Darlinghurst NSW
2010
(02) 8382 1111
www.stvincents.com.au

Prince of Wales Private Hospital
Barker St Randwick NSW 2013
(02) 9650 4000
www.princeofwalesprivatehospital.
com.au

Free to Attend Conference and Workshops

All conference and workshops areas are free to attend. All seats are on a first-come, first-serve basis so we ask that you do not reserve seats for others.

Food & Drink

A food and beverage point has been provided on the show floor at the cafe area where you can purchase both hot and cold food and refreshments. You are not allowed to bring any outside food (either from home or purchased elsewhere) onto the show floor.

Organizer stand

The organizer stand can be located at the Entrance, next to the Registration Area.

Parking

Wilson Car park across from the venue in the Entertainment Quarter is available for parking.

Photography & Filming

If you want to take your own photographs or footage of the event, you must kindly get approval from the event organizer.

Sales/Re-Booking

If you are interested in exhibiting at Sydney Build 2019 or any other Oliver Kinross International Build Series events, please visit Oliver Kinross Stand which is located at Stand 209

Smoking

Please note that all rooms and public amenities at the PLAYBILL VENUES are deemed non-smoking areas. Your co-operation is greatly appreciated.

Security On-Site

For any security issues, please contact a member of the event organizing team who will assist you in locating a Security Officer

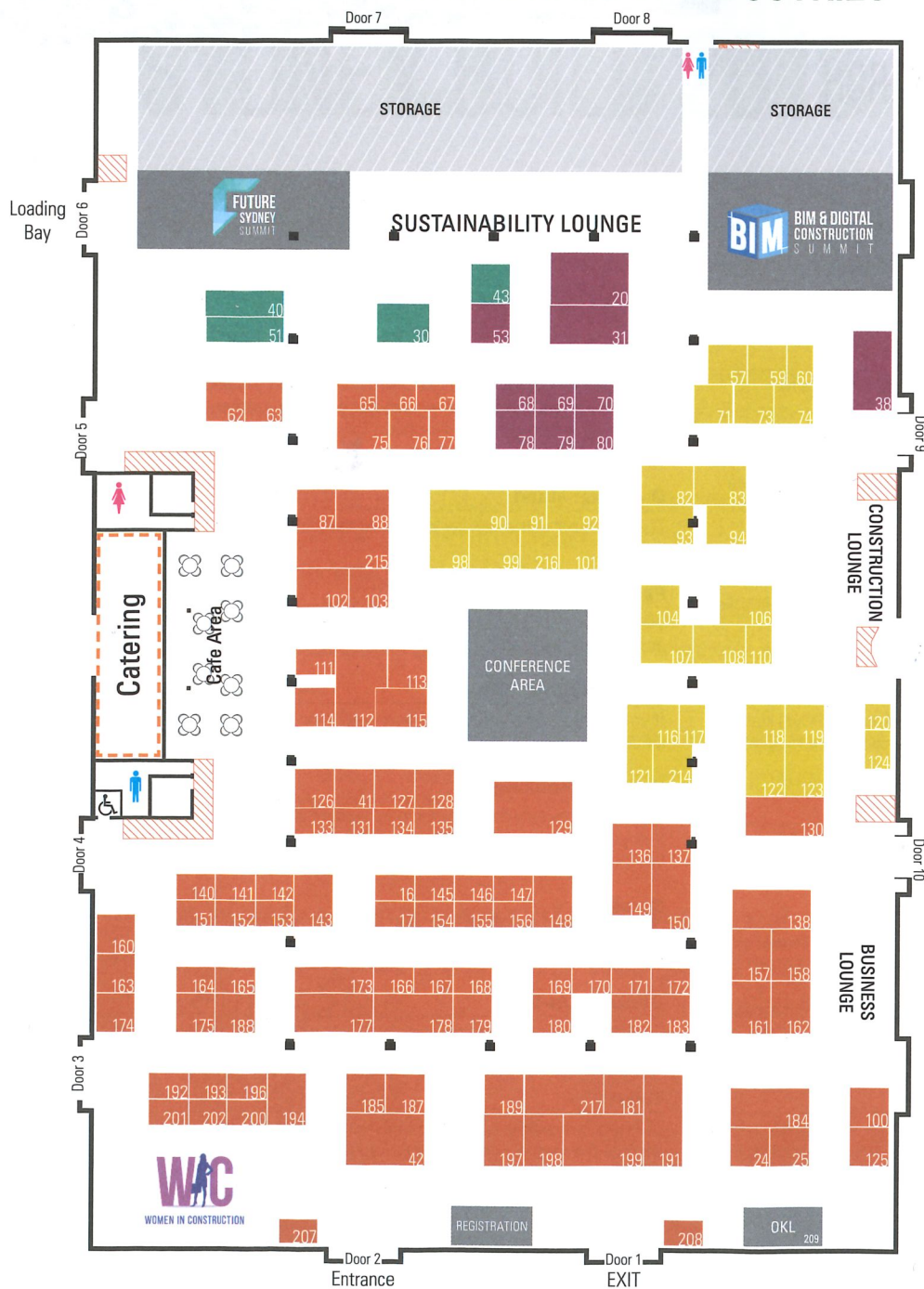
Toilet

Toilets are available both inside the venue close to the CAFE and also at the back of the venue close to the storage.

IMPORTANT CONTACT NUMBERS

PLAYBILL VENUES Office Telephone: (02) 9921 5333

FLOOR PLAN ROYAL HALL OF INDUSTRIES



COMPANY	STAND
1300 Apprentice	63
A2K Technologies	117
Abtrac	153
ACOR Consultants Pty Ltd	69
Archicom Singapore Pte Ltd	194
ARES PRISM	94
Ashford Formula	78
ATA/ReNew Magazine	79
AUSTRUSS	112
Auswave Products (Aust) Pty Ltd	185
BEAL Certification Service Limited	152
Bee Breeders	99
Bestate Group	88
BIRRUS MATTING SYSTEMS	136
Blundstone Australia Pty Ltd	140
BMI Group	41
Bookmarc	155
BOSS Passive Fire	214
Bostik	154
BRAFORD INDUSTRIES	114
Builders Base	40
Buildtools Pty Ltd	101
Bureau Veritas Australia	166
C & A Surveyors	16
C.R Kennedy	57
Cadonia	70
Clarke Murphy Print	51
Compliance Council	216
CONSYSTEX	161
CoreLogic	127
CSIRO	141
Takagi Co., Ltd.	142
Durotech	162
Easy Payslip	74
Embelton	59
Escea Gas Fires	138
Euroclass Windows	191
Evergreen Walls	217
Ezyprofile Systems	118

COMPANY	STAND
FaMe / IPROM	110
FARO Technologies	76
Floorex Products	129
Fosroc	80
Global GreenTag International	73
Goop Guys	188
Grass Reinforcement	43
Handyman	124
Hercules Carparking Systems	215
Hoverscape Drone Services	165
IFE Elevators	134
Ignite	169
Ihita Formworks Pty Ltd	198
ANZ iHome Group Pty Ltd	150
Premier Construction Software	115
Ingal Civil Products	62
Jotun Australia Pty Ltd	98
King Painting Specialists Pty, Ltd.	120
Kingspan	102
König Australia	171
KORDON TERMITE MANAGEMENT SYSTEM	65
Leaf Free Gutter Guard	183
Lorient	75
Lowes Corporate Wear	147
M.B Exports Limited	125
Siteoffice.mobi	193
MASTERWALL	207
Mend Services	196
Mitsui Chemicals Asia Pacific Ltd	149
Modern/Manufactured Frameless Glass Systems	87
ModularWalls	30
Multinail	164
Nearmap	93
Nexvia	60
NON-DRILL POST and HANDRAIL SYSTEM	192
Oakfair Industrial Ltd	104
OzCAD Vectorworks	71

COMPANY	STAND
Ozroll	184
Pathtech - Drug Detection	133
Perfect Hire	146
PHD Group Australia	135
PlanRadar GmbH	91
PLASMACEM	68
PRO9 Global Pty Ltd	92
PROMAT AUSTRALIA	131
Pyrotek	151
R.O.C. ESTATE EXHIBITION EXCHANGE ASSOCIATION	208
Rodney Stevens Acoustics Pty Ltd	137
ROTHOBLAAS	126
SAI Global	170
SILVADEC	128
Smartroll	77
Smartest Home	66
SnagR	67
Summer	111
Square Circle Formwork Australia	53
SunLED	175
Tek Tile	31
The Chartered Institute of Building Australasia (CIOB)	181
The TRADIE	100
TILT Industrial Design	197
Tradewrap	167
UNIBUILD TECHNOLOGY	160
VANACHAI GROUP PUBLIC CO.,LTD	157
Vibration Solutions Pty Ltd	201
Viewpoint	116
VIZ360	82
Weathertex	113
XLam	143
Dongying Tousin Precision Metal Ltd	200
Jinan AIMI Automation Technology Co., Ltd	180
LINYI CHANTA INTERNATIONAL TRADING CO.,LTD	25

COMPANY	STAND
SHANDONG ADDISION TRADE CO., LTD	17
SHANDONG JINTELI NEW MATERIALS CO., LTD.	179
SHANDONG WOODHOME TRADING CO.,LTD.	24
Ticar Industrial Limited	189
LINYI JIAHONG INTERNATIONAL TRADING CO.,LTD	187
XIAMEN CASAVERDE BUSINESS CO., LTD.	182
XIAMEN CITY YADILONG IMP.& EXP.CO.,LTD.	156
XIAMEN YADONGLONG IMP.& EXP.CO.,LTD.	148
Yao Hoo Metal Industrial Ltd.	202
GUANGDIAN INDUSTRIAL GROUP LIMITED	145
M & M INDUSTRIES CO., LTD.	172
Valuedshow Management LLC	163
Allcon Group	90
AUSREO PTY LTD	121
BEDROCK OFFSITE	103
BRANDS IN MOTION	168
Decorative Imaging	106
Faresin Formwork Australia PTY Ltd.	178
GECA (Good Environmental Choice Australia)	212
HP Designjet	38
Mitsubishi Heavy Industries Air-Conditioners Australia	177
PlanGrid	199
Red Cartel	20
Regupol Acoustics & Vibration	130
Simmonds Lumber	174
Urbanline Architectural	107
Viega	42

EVENT & MEDIA PARTNERS



HEADLINE SPONSOR



SPONSORS

GOLD SPONSOR



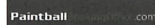
SILVER SPONSOR



BRONZE SPONSOR



EVENT & PRIZE SPONSOR



CONFERENCE DAY ONE 15TH MARCH



Sustainability

09:35 Chairman Opening Remarks



John Fildissis - Eptec

09:40 Keynote Address



Councillor Craig Chung - City of Sydney

10:00 Digital Divide - Making the Switch to Mobile



Adele Bernard, APAC Marketing Director - PlanGrid



Stuart Frederich-Smith, VP of Product Marketing - PlanGrid



Trevor Forsyth, CEO - Projection Group

10:40 Emerging Trends in Developments, Design and Built-Form



Emily Mudge, Health, Government & Institution Sector Manager - Icon Co

11:00 How to Get It Right First Time... So You Don't Need Us!



Grahame Vile, Board Member - Australasian Concrete Repair Association (ACRA)

11:20 Digital Engineering at Transport for NSW



Simon Vaux, Director of Digital Engineering - Transport for NSW



Ryan Townsend, Manager of Digital Engineering - Sydney Metro

11:40 The Rise of the Tallest Resi Building in Sydney: The Drive of Its Unique Character and the Design Solution



Keith Mak, Design Manager - Greenland Australia

12:00 Sustainability Is Key to Winning Infrastructure Work in Australia



Paul Davies, Communication and Sustainability Manager - Northwest Rapid Transit

12:20 Rainwater & Wastewater in the 21st Century



Michael Smit, Technical and Sustainability Manager - Kingspan Environmental

12:40 Passive House for a Warm Climate



Andy Marlow, Director - Enviroitecture

13:00 The Sustainable Way Forward: To Build To Procure To Specify



David Baggs, CEO - Global Green Tag

13:20 LCA in Buildings, and Its Increased Role



Jonas Bengtsson, CEO - Edge Environment


13:40 "Wholeness" i.e. The True Meaning of Sustainability In an Ever-changing Environment and Population



Jo Gillies, Director - Archisoul Architects



15TH MARCH CONFERENCE DAY ONE

 Technology and Design

14:00 Modular - Fast & Smart. Buildings for All Occasions



James Ward, Director Strategy - NBRSEARCHITECTURE

14:20 Sydney Transport Architecture: Design and Technology Interwoven



David Holm, Director / Architect - Cox Architecture and Adjunct Professor - University of Technology Sydney



Andrew Butler, Lead Computational Designer - Cox Architecture

14:40 Negotiated Formation: The Advanced Materialisation of Design



Iain Maxwell, Senior Lecturer - University of Technology, Sydney and Director - Supermanoeuvre

15:00 Technology's Influence on the Construction Industry



Helen Awali, CEO and Founder - Bookmarc



Paul Kouppas, Head of Innovation - Auggd



Rachel Kidwell, Founder - TCPinpoint



Anthony Habashy, National BIM Manager - GroupGSA

15:40 How Aerial Imagery Is Transforming Urban Development



Alex Doyle, Head of Strategic Account Management - Nearmap

16:00 The Latest Mobile Technology Innovations for Quality Assurance, Safety & Inspections



Mark Henderson, Managing Director (Asia) - SnagR Ltd



Peter Bennett, Sales Director - SnagR Ltd

16:20 The Time and Place for Window Film



Rob Hamilton, Vice President - Window Film Association of Australia & New Zealand

16:40 Chairman Closing Remarks



Jo Gillies, Director - Archisoul Architects



CONFERENCE DAY TWO 16TH MARCH



Safety, Standards & Fire

09:35 Chairman Opening Remarks



Mark Simister, Head of Delivery Management - Sydney Water

09:40 Partnering for Success: Sydney Water's "Yours To Lose" Capital Delivery Framework



Mark Simister, Head of Delivery Management - Sydney Water

10:00 From Planning to Implementation – Making the Three Cities Vision a Reality



Philip Graus, Director - Western City Deal at Greater Sydney Commission

10:20 Workplace - What to Expect in 2018 and 2019



Peter Black, National Director of Workplace Strategy and Design - Colliers International Australia

10:40 Transport Orientated Development and the Impact of Infrastructure Investment on Australian Cities



Mark Kelly, Managing Director - WestonWilliamson Pty Ltd

11:00 Sydney Construction Market Update



Eliza Owen, Commercial Research Analyst - CoreLogic

11:40 Start With the End in Mind – How to Achieve Successful Project Completion



Stephen Pascall, Director - Management • Commercial • Engineering

12:00 Where Is the Future Workforce Coming From? And What Skills Do They Need?



Phillip Charlton, CEO - Skills Oz

12:20 How Artificial Intelligence Is Shaping the Future of Construction, Particularly in Health and Safety and How It Will Affect Construction Contracts



Jennie Baker, Jennie Baker Law, representative of the CIOB Sydney Hub committee

12:40 The Role of Standards in the Building Sector



Ron Pulido, Stakeholder Engagement Manager - Standards Australia

13:00 Fire Resistance, Combustibility and Fire Hazard Properties – Understanding the Building Code of Australia Requirements



Christina Knorr, Senior Fire Safety Engineer - Stephen Grubits & Associates



16TH MARCH CONFERENCE DAY TWO

13:20 Fundamentals of Project Quantitative Cost and Schedule Risk Analysis (QRA)



Pedram Danesh-Mand, NSW President Risk Engineering Society, Technical Director – Risk APAC, Aquent/Jacobs

13:40 ISO45001 A New International Standard for Safety Management Systems



David Solomon, Executive Officer, Safety & Risk - Master Builders Association of NSW

14:00 Building People – How to Develop Great Sales People



Charlie Pidcock, Director - www.charliepidcock.com.au

14:20 A Human-centred Approach to Building Sustainable Safety



Deborah Keep, Director - deborahkeep.com

14:40 A New Direction for Construction Software – Connect Your OFFICE, TEAM and FIELD - A Total Solution



Andrew Tucker, Product Manager APAC - Viewpoint

15:00 Leveraging Technology to Drive Profits!



Jason Furness, CEO - Manufacturship

15:20 Rich Training Builders Workshop



Rich Latimer, Director - Rich Training

15:40 Embracing Digital Transformation in the Construction Sector



Kalil Zeitoun, Co-Founder and Construction Manager - siteoffice.mobi

16:00 Chairman Closing Remarks



Pedram Danesh-Mand, NSW President Risk Engineering Society, Technical Director – Risk APAC, Aquent/Jacobs



DAY ONE MARCH 15TH

10:00 Computational Design and Automation in Architectural Design Process



MACIEJ WYPYCH
Studio BIM Manager
Warren and Mahoney

10:50 BIM Implementation - Training and Skills to Meet the Mandate



NATHAN HILDEBRANDT
Director
Fulton Trotter Architects

11:40 BIM for Landscape Architects: Revolutionising the Work Process



Matt Coggan
Associate
Turf Design Studio

12:30 Autodesk BIM 360 2018 Update



SAMUEL MACALISTER
Senior BIM Solutions Engineer
Autodesk

13:20 BIM & Design Technology



HOLGER DE GROOT
National Director of BIM
HDR

14:10 BIM in the Common Data Environment



PAUL HELLOWELL
Director
AusBIM

15:00 Digital Delivery, the Future of Engineering



SUIBHNE CULLEN
Technical Director, Digital Delivery, Australia & New Zealand
Mott MacDonald

DAY TWO MARCH 16TH

10:00 Automated Workflows for Contractors



ADAM SHEATHER
Co founder
Bad Monkeys

10:50 "Tick Every Box" BIM



RODD PEREY
Principal
Architectus

11:40 Data Formats for BIM Collaboration - Best Practices



DHANJEET SAH
National BIM Manager
Rothelowman

12:30 BIM for Contractors. What Does That Mean and How Has It Changed Our Approach to Project Delivery



TYRONE PADAYACHEE
Digital Design Manager
Richard Crookes Constructions

13:20 BIM Maturity and Business Going 100% BIM



STEVEN COYLE
Associate Technical Director, Digital Engineering
Arcadis

14:10 Digitising Construction for Handover



MITCHELL PUNCH
Senior Digital Project Manager
Ridley

15:00 The Transition from Design BIM to Construction BIM



SUREN N PAKERI
Project BIM Manager
AECOM

DAY ONE MARCH 15TH

10:00 GO WEST! Building a Smart and Resilient City in Sydney's West



ROB ROGGEMA
Professor of Urban Environment
University of Technology Sydney

10:50 How the IoT Will Revolutionise Smart Buildings and Cities



BOB SHARON
Chief Innovation Officer
Blue IoT

11:40 How 202020 Vision Has Used a Collective Impact Model to Increase Urban Greening



MEG FRAWLEY
Program Manager
202020Vision

12:30 Four Pathways to Zero - Keeping Ahead of the Regulation Curve



DR CAROLINE NOLLER
Founder & Chief Strategy Officer
The Footprint Company

13:20 How to Achieve a Passive House – The Path to PH Certification



KYLIE MILLS
Director
BluKube Architecture

14:10 Realising a Living Future



STEPHEN CHOI
Executive Director
Living Future Institute of Australia

15:00 Opportunities in Build to Rent Market



QUENTIN KEEBLE
Managing Director & Founder
London Home Quarters

DAY TWO MARCH 16TH

10:00 Designing for Future Generations



SANDEEP AMIN
Managing Director
DesignInc Sydney

10:50 Green & WELL With Materials in Mind



KATE HARRIS
CEO
Good Environmental Choice Australia



HANNAH MORTON
Associate
Cundall

11:40 A Planned Retro-home for the Future



RICHARD SALMAN
Director
2RKS Architecture + Design

12:30 Gender Neutral Designs for the Future Workplace



STEVEN ASNICAR
CEO
Diversity Australia

13:20 The Cost of Delaying Stronger Home Energy Standards



ELI COURT
Program Manager
ClimateWorks Australia

14:10 Smart and Sustainable Design of Low to Mid Rise Buildings Utilising Engineered Timber Products, Prefab Technology and Virtual Design



DR FRED MOSHIRI
Senior Structural Engineer
ACOR Consultants Pty Ltd

15:00 Innovation in Design for Small Residential Lots



DANIEL SIMONE
General Manager
Simonehome

PLAN LIKE A BOSS.

Transform the way you plan, manage, and monitor development projects by leveraging the most current, accurate high-res aerial imagery of Australia's major urban and regional centres. Extract powerful, location-specific insights with precise measurement tools and rich visual data.



Captured 18/01/2018
Parramatta NSW

LEARN HOW
www.nearmap.com.au

nearmap

TRANSFORM THE WAY YOU WORK, FROM THE TOP DOWN.

(THE BEER'S ON US.)

Drop by Nearmap Booth #93 and enter the draw to win a BrewArt BeerDroid personal brewer. Learn how you can leverage current, high-res aerial imagery to spend less time visiting sites & more time crafting awesome hops.



Captured 18/01/2018
Parramatta NSW

LEARN MORE

www.nearmap.com.au

nearmap 

1300 APPRENTICE

63

1300apprentice

www.1300apprentice.com.au

A non-for-profit group training organisation, 1300apprentice has over 30 years' experience in employing apprentices and trainees in over 40 vocations.

With offices in Sydney and Canberra our coverage spans from Sydney Metro, Southern Tablelands, NSW South Coast, regional NSW, ACT and surrounding areas.

Our professional and approachable team has an in-depth knowledge of the Vocational Education and Training industry ensuring a quality of service which is at the centre of our operation and ethos.

Guided by a commitment to career development through on and off the job training, 1300 apprentice works closely with businesses and client partners to achieve vocational excellence.

We enable people to succeed in their careers and enable businesses to be successful!

A2K TECHNOLOGIES

117



www.a2ktechnologies.com.au

A2K Technologies fosters innovation through delivering software and hardware solutions, consulting, training, development and managed services.

Our highly knowledgeable and industry-experienced staff from the Architecture, Engineering, Construction, Infrastructure, and Manufacturing sectors enhances our customers' organisational capabilities, to deliver on project outcomes and differentiate from the competition.

With a great footprint throughout the ANZ region, A2K has strategic partnerships with many major software and hardware vendors, including Autodesk, Microsoft, Adobe, HP, Bluebeam, Ultimaker, Symantec, and Citrix.

We have become a trusted technology advisor to our customers through the breadth and depth of our service offering and technical expertise, our commercial flexibility and high levels of customer service and understanding.

Our Professional Services and Consulting divisions include experienced technical consultants with industry experience. Our operations, resources and infrastructure equate to the highest level of technical support.

ABTRAC

153



www.abtrac.com

Abtrac is project management software for architects, designers, consulting engineers, cost estimators, project managers, planners, surveyors and other professionals in the construction and infrastructure development space.

Abtrac is all about clients, jobs, stages, fees, schedules, subconsultants, time and disbursements, invoicing and effective reporting for professionals who need to know how everything is tracking. Abtrac manages each project and all projects across each business, from the proposal through to final invoicing. It has extensive reports and is highly configurable to suit your business. And we seamlessly integrate with Xero, MYOB, Quickbooks, Reckon, Moneyworks and Sage and other systems. Abtrac is online, cloud based software, accessible from anywhere on any web enabled device.

Clients say Abtrac significantly increases their revenue. It decreases write-offs and makes everyone aware of real time status of each and every project.

ACOR CONSULTANTS PTY LTD

69



www.acor.com.au

ACOR Consultants is an Australia-wide group of multi-disciplined Engineers, Infrastructure Planners, Managers and Designers. We have over 20 years' proven experience in providing specialist Civil, Structural, Remedial, Building Services (Mechanical, Electrical, Hydraulic, Fire), BIM, Petrochemical and Sydney Water Services Coordination.

Established to fill a market need for integrated specialist consultancy services, the company's multi-discipline approach has successfully delivered thousands of projects across the country. We offer services in a number of market sectors, from major infrastructure and hospital projects through to large scale Defence, land development, retail, commercial, remedial, petrochemical and residential projects.

As a professional services group, our employees are the key to developing and sustaining relationships and building on our collaborative working culture with our clients. This culture allows ACOR to add value at every stage of a project by bringing together passionate, dedicated people who challenge, explore and expand traditional thinking through their expertise and hands-on approach.

ALLCON GROUP

90



www.allcongroup.com.au

Allcon Group is a specialist supplier to the Australian concrete construction industry.

An established family business for over 30 years, Allcon Group offer supply solutions for concrete contractors across a large range of tools, equipment, consumables and formwork systems.

Allcon Group has a focus on saving our customers time, built on a foundation of industry leading product knowledge, fast response times and a fast, accurate delivery service.

As exclusive Australian distributors, Allcon Group are pleased to be showcasing the innovative Geoplast Plastic Formwork Solution at SydneyBuild 2018.

With Allcon You're Set.

ANZ IHOME GROUP PTY LTD

150



www.ihomegroup.com.au

ANZ iHome Group — Switch on smart living

Market leading home automation solution, applying to various industries such as residential intelligence, pension intelligence, hotel intelligence, and commercial office intelligence. Professional for providing customers more convenient, more comfortable, healthier and safer environment.

Professional and practical smart home application with product lines of 100+ products covering intelligent home appliance control, smart lighting, smart security, smart health, smart environment protection, smart office, and smart steward etc. Support multiple languages.

Feature — combination as wish, one key control

Family safety intelligence:

Family lighting intelligence:

Home appliance intelligence:

Family security intelligence:

Sleep health intelligence:

Hotel RMS intelligence:

Commercial/Office intelligence:

Aged Care intelligence:

ARCHICOM SINGAPORE PTE LTD

194



www.archicom-acm.com

ARCHICOM Singapore Pte Ltd, a company established since 2005, an ISO 9001, ISO 14001, ISO 22301, and OHSAS 18001 accredited MANUFACTURER who mainly produce Aluminium Honeycomb Panel, Aluminium Stonewool Panel and Aluminium Composite Panel in Singapore.

ARCHICOM Singapore provides highly customized cladding solutions for variety of design, building and construction projects. Our vision is to produce quality materials that bring innovative designs to life and shape the beauty of urban landscapes.

All ARCHICOMTM products are fully complied with the fire safety requirements set forth by Singapore Civil Defence Force and many other countries with maximum classifications to be used in Interior and Exterior Façade Cladding and roofing shelter projects with no restriction to height control.

ARES PRISM

94



www.aresprism.com

PRISM is an enterprise project lifecycle management software solution that supports the planning, execution, and completion of capital projects for dependable forecasts, cost control, and performance measurement. Integrate and standardize management processes with PRISM modules for Estimating, Cost Management, Engineering Management, Procurement, Contracts, Field Management, and Dashboards.

ASHFORD FORMULA

78



www.ashfordformula.com.au

Ashford Formula is the World leader in concrete densification. Ashford Formula is a colourless, transparent liquid that penetrates concrete and masonry building materials, protecting, preserving, and strengthening them.

Ashford Formula can be used on new or old concrete. It is commonly specified for use in warehouses, distribution centres, aviation hangers, exhibit halls, stadiums, car parks, manufacturing plants and food processing facilities.

Ashford Formula Australia provides a 20-year written warranty for the treated surface to



remain sealed, hardened and free of concrete dust.

ATA/RENEW MAGAZINE

79



www.ata.org.au

The Alternative Technology Association (ATA) is a not-for-profit organisation that enables and inspires people to live sustainably in their homes and communities. Established in 1980, the ATA provides expert, independent advice on sustainable solutions.

The ATAs more than 6500 members across Australia walk the talk in their own homes. We've helped thousands save money and reduce their environmental footprint with information on sustainable design, energy efficiency, solar power, batteries, rainwater tanks and more.

We influence government policy by drawing on our technical expertise and members' experiences, and advocate for easy access to sustainable solutions and continual improvement of the technology, information and products needed to change the way we live. The ATA also provides consultancy services based on our technical expertise.

We publish two market-leading sustainable living magazines, Sanctuary: modern green homes and ReNew: technology for a sustainable future and organise the extremely popular annual event Sustainable House Day.

AUSREO PTY LTD

121



www.ausreo.com.au

Ausreo is a leading provider of reinforcing products and solutions to the building and construction industry with locations in Queensland, New South Wales and Victoria.

In New South Wales, Ausreo operates state of the art manufacturing facilities in Wetherill Park which includes a dedicated 6,000m² under-roof prefabrication workshop and continues to connect with the local building and trade community through a dedicated Service Centre Network.

The Ausreo product range includes processed reinforcing bar and mesh, prefabrication and residential pod slab packages. In addition Ausreo provides a range of complimentary reinforcing products including jointing systems, threaded reinforcing bars and couplers and pull out boxes/reinforcing continuity systems.

Recognising the continuous evolving nature of construction, Ausreo has invested heavily in technology which includes bespoke 3D Reinforcing Scheduling Software – ADDA/DFMA (Advanced Detailing and Design

Application/Detailing For Manufactured Assemblies) and can provide BIM solutions.

As a 100% Australian owned and operated business Ausreo is proud to have been involved in some of the most significant projects in NSW and continues to be an ongoing partner with the Australian building industry to deliver on the mantra of 'Build With Confidence'.

AUSTRUSS

112



www.austruss.com.au

At Austruss there's nothing we like better than to look at the structure of a building and to develop a way to build it smarter, faster and leaner.

Established in 2003 by Andrew Fowler and his team, Austruss first emerged as a frames and trusses business, and has since grown to become the team builders turn to when they need a custom solution that can speed up critical path milestones and offer budget savings without compromising quality.

Through our business in frames and trusses we have learnt how to take a manufacturing approach to building, and to use the knowledge of our team, and the controlled environment of our extensive manufacturing facility to apply a modular approach to construction – all made within Australia.

As a business, we're an unusual mix because we love building and we love the control and efficiency manufacturing can offer. We think that when you bring the two together, there are beautiful efficiencies to be had from a sustainability, time, and quality point of view.

AUSWAVE PRODUCTS (AUST) PTY LTD

185



www.auswaveproducts.com.au

Auswave Products has supplied the plumbing and building industry for some 20 years with heeeguard drainage systems. Our systems cover civil drainage, architectural, bathroom and water features to name a few. We specialise in custom requirements for drainage applications nationally. Auswave Products (Aust) offers full on site measure with CAD facility for design refinement.

BEAL CERTIFICATION SERVICE LIMITED

152



www.beal.co.nz

BEAL is the acronym for 'Building Element Assessment Laboratory'. Commencing

product assessments in 2004, is it two entities covering product testing and certification throughout Australasia. The two main services are BEAL Testing Services and BEAL Certification Service producing CodedMark Certification and Appraisals

BEAL has developed expertise covering exterior envelope products, roof systems, waterproofing membranes, window and door assessments. The Principal Building Scientist, Colin Prouse, has more than 30 years in the building and assessment fields.

With widespread risk aversion by councils and certifiers to accept new building products without proof of compliance, in either Australia or New Zealand, BEAL has developed a global network of independent experts and laboratories that allows for the efficient assessment and provision of proof of compliance.

BEAL also conducts private research. Entities interested in improving their product can approach BEAL with ideas and describe what they are requiring.

BEDROCK OFFSITE

103



www.bedrockoffsite.com

Bedrock offers beautiful, highest quality bathroom and custom modular solutions manufactured to your design, fixtures, fittings and finishes. Delivered to your site when you need them; fully completed, defect free, compliant with all Australian codes, tested and certified.

BEE BREEDERS

99



www.beebreeders.com

BEE BREEDERS is the world's leading architecture competition organizer who carries out fully inclusive organization work for architecture projects and ideas competitions.

BESTATE GROUP

88



www.bestate.com.au

We are factory-direct seller, and provide scaffolding solutions and high quality scaffolds / frames and accessories. You can trust our Australian Standard products and exceptional service.

BIRRUS MATTING SYSTEMS

136



www.birrusmatting.com.au

Birrus have been proud manufacturers in Melbourne since 1948. Our highly engineered architectural matting systems are synonymous with style and quality. We are passionate about Australian Made and all of our structural grade aluminium is extruded locally. We offer a large range of colours to suit any décor. Birrus also have an impressive range of surface mounted matting, tactile, stair nosings and anti slip grit tapes. Birrus continues to grow from strength to strength after all of these years thanks to the best matting products on the market and our acclaimed customer service. Our manufactured matting comes with a 10 year warranty and we have distributors in each state.

BLUNDSTONE AUSTRALIA PTY LTD

140



www.blundstone.com.au

Blundstone is a 100% Tasmanian owned and operated business that's been making boots since 1870.

With a commitment to quality, the company has a long and proud tradition of making the toughest, no-nonsense footwear for work and play.

Despite having grown into one of the world's most recognisable boot brands, Blundstone retains its family values. Its headquarters are based in the Hobart suburb of Moonah, housing its administration, sales, marketing, communications, quality management, customer service and logistics sections, as well as its research and design centre and gumboot factory.

Decades of innovative design and production mean Blundstone now oversees a global supply chain bringing together the best ideas, components and designs to complement a wide range of products – from its iconic elastic-sided boots loved worldwide, to gumboots, lace-up safety footwear for men and women, heavy duty industrial footwear, school shoes and casual footwear.

Blundstone understands what you need in safety boots – and has developed the best.

Now sold in more than 50 countries across 5 continents, Blundstone brings you comfortable, safe and tough boots.



BMI GROUP

41

BMI

www.bmigroup.com

At BMI Group, we believe a roof can offer so much more than shelter, protection and peace of mind.

Today a roof can also be a power station, a living space, a vertical garden, even a work of art.

The roofs above our heads have the potential to transform the way we live and work.

The possibilities are endless – and we're here to help everyone see them clearer than ever.

BOOKMARC

155



www.bookmarc.io

Bookmarc showcases stunning architectural projects, allowing users to source products directly from portfolios uploaded by design firms. We connect product suppliers with design professionals in a unique format allowing users to create digital libraries, source technical literature & connects design professionals and suppliers on collaborative works through 'Project Connect'.

Source, share & connect now all on Bookmarc.

BOSS PASSIVE FIRE

214



www.bossfire.com.au

Construction companies around the world are now taking the initiative to install BOSS systems into their projects and are reaping the benefits of their decision.

BOSS Fire's unrivalled dedication to their customers, elevates their confidence by identifying the specific product they need and through advice and information, help them manage the fire protection of their services themselves.

Through the development of advanced intumescent technologies, BOSS has demystified the field of passive fire protection and installation procedures, tapping into a large audience of customers at the developer, building trades and sub-contractor level. This audience is broad and seeks technical information that's easy to understand. Thankfully, BOSS's products offers improvements in both the level of compliance and cost of finished installation, making BOSS a popular choice for the passive specialist and general trades alike.

Working together with major Tier 1

construction companies, BOSS Fire constantly raises the bar in product innovation, cost and service. Developing systems that are cost-effective, eliminate non-compliant risks and provide solutions to complicated construction applications. The newest development of the BOSS FyreBox™ led to BOSS Fire winning the FPAAs Project of the Year title.

BOSTIK

154



www.bostik.com.au

Bostik is a leading global adhesive specialist in industrial manufacturing, construction and consumer markets. For more than a century, we have been developing innovative adhesive solutions that are smarter and more adaptive to the forces that shape our daily lives. Our wide product range encompasses all technologies in sealant and adhesive applications, with many products proudly manufactured in Australia since the 1950's. Our extensive and knowledgeable sales team are available to work with our customers to develop engineered product solutions of the highest quality. For more information on our products and services, please contact your local Bostik representative.

BRAFOR INDUSTRIES

114



www.brafordindustries.com.au

BRAFOR INDUSTRIES – Creative and efficient use of timber products.

For over 20 years, Braford has been involved in both the Australian and New Zealand markets for timber workflow and barcode tagging, construction solutions and fastening options. Drawing on unmatched industry experience, the consistent Braford approach has been to add value through sourcing the latest technologies for creative and efficient use of timber products.

Braford assist businesses by procuring "complete solutions" and then delivering reliable supply of all consumables required for those systems.

Solutions Include:

RAPTOR® composite polymer staples, nails, and specialty fasteners can be cut and sanded without damaging router bits, saw blades and sanding belts, and provide complete corrosion resistance.

LignoLoc™ is the first ever fireable wooden nail for future-oriented use in industrial production and ecological timber construction. LignoLoc wooden nails are made from indigenous beech wood and boast a tensile strength similar to aluminium nails.

The Timber Tagger® is a patented tool that,

when attached to a pneumatic staple gun, can advance, cut and staple tags with a single pull of the trigger.

BRANDS IN MOTION

168



www.brandsinmotion.net.au

Brands in Motion are a leading Sydney promotional merchandise supplier and members of the Australasian Promotional Product Association.

We work with 'Brand name' and 'Generic' suppliers primarily in Australia who along with our decorators offer ISO quality assurance & compliance certification

Brands such as Bisle, BLK, Bolle, Bushnell, Callaway, Caribee, Cross, Mag-Lite, Nike, Seiko, Victorinox, are just a few brands that we have co-branded.

Our target audience covers Automotive, Building, Financial, FMCG, Government, Hospitality, I.T, Mining & Security with thousands of premium and budget orientated product solutions at your disposal for projects such as:

Corporate Golf days

Conference & Trade events

Corporate / Hi-Vis Uniforms

Brand awareness campaigns

Gift giving for all occasions

Retailer Merchandise Incentives

Reward / Loyalty programs for Staff & Consumers,

Promotional campaigns including new Product launches.

Backed by years of experience, we guarantee an unrivalled and transparent level of service plus a total understanding of client expectations as we deliver workable solutions.

When next considering branded merchandise, please call +61 450 737 357 to speak to a member of our team, or simply visit www.brandsinmotion.net.au or email: info@brandsinmotion.net.au

BUILDERS BASE

40



www.buildersbase.co.au

Builders Base is a leading website for everyone involved in our thriving construction industry. It's perfect for suppliers to reach their audience in a more targeted way and great for builders, tradies and back office staff to find out the latest news, regulation and industry updates, events, industry links and new products and services.

Connecting the industry like never before,

Builders Base has something for everyone from apprentices to business owners, industry professionals, associations and Govt. If you want to reach people in construction or stay in the loop – Builders Base – 'You'll find it all here!'

BUILDTOOLS PTY LTD

101 BUILDTOOLS

www.buildtools.com.au

Since 1999, Buildtools has helped hundreds of Australia's leading construction companies to automate tasks, streamline processes, enhance efficiency and eliminate costly errors throughout every phase of a project's life.

Designed specifically for the Australian Construction Industry, Buildtools is a user-friendly software system that focuses on:

- Tendering + Bidding
- Document Control
- Communication + Collaboration
- Project Management
- Quality + Safety Documents

All files are stored securely on a centralised database, accessible from desktops, web-browsers and mobile devices. Builders, clients, consultants, contractors, suppliers and authorities can all connect to the software and collaborate in real-time.

Proudly Australian owned and operated, Buildtools comes with outstanding customer support.

BUREAU VERITAS AUSTRALIA

166



www.bureauveritas.com.au

We are a world leader in Testing, Inspection and Certification. Our mission is at the heart of key challenges: quality, health and safety, environmental protection and social responsibility. Through our wide range of expertise, impartiality and independence, we foster confidence between companies, authorities and consumers. For 190 years, our brand has been synonymous with integrity and trust, for the benefit of business and people. As a trusted partner, Bureau Veritas offers innovative solutions that go beyond simple compliance with regulations and standards, reducing risk, improving performance and promoting sustainable development.

Bureau Veritas Certification holds more than 60 accreditations globally to deliver locally accredited certification and verification services. We offer a large range of customised services in the Quality, Health & Safety, Environment, and Social Responsibility. We also provide a suite of integrated compliance based services in Building



Surveying, Accessibility and compliance risk management.

Bureau Veritas helps your business, move forward with confidence.

C & A SURVEYORS

16



www.candasurveyors.com.au

C&A Surveyors NSW Pty Ltd is a Land surveying firm offering specialist quality expert advice on a range of surveying services. We strive to maintain the highest standards in every aspect of our business and continually embrace new technologies in turn improving our systems and services to our clients.

We are a rapidly growing company based in plush offices in North Parramatta NSW. We service the whole of the Sydney area and pride ourselves on being responsive and available when required. We understand the demands of construction projects and are quick to respond to requests for work to be carried out.

We have a team of five Registered Surveyors and twelve field parties with a vast network of support staff including our drafting department which consists of seven draftspersons.

In addition to this we have our Survey Manager, Survey-Co-ordinator and accounts and Quality Assurance departments.

Each and every member of C&A Surveyors is highly valued within the company and strives to provide the best experience for each and every client that engages us.

We look forward to working with you on your next project.

C.R. KENNEDY

57



www.crkennedy.com.au

CR Kennedy is your national partner for all positioning needs from survey to machine control to building construction and everything in-between. Wherever you are in Australia, C.R. Kennedy are with you, providing an unparalleled level of service and support from industry experts to get the job done safely and efficiently. C.R. Kennedy is also the largest national importer and distributor of surveying equipment in Australia, and the exclusive distributor for leading brands such as Leica, Reigl, Myxos and others.

CADONIA

70



www.cadonia.com

Cadonia provides Revit and AutoCAD drafting and 3D Modeling/Rendering services for a diverse range of clients.

With offices in Australia and Europe, Cadonia works with clients from all over the world on Telco Mobile Infrastructure, Commercial Buildings, Shopping Centres and Residential/ Apartment projects.

Our business model is built around developing long-term relationships with our customers based on providing high quality and cost-efficient services. Our drafting teams focus on delivering projects for our clients based on our reliability, successful results and efficiency.

Cadonia offers:

- Telco Drafting Services
- 3D Rendering
- BIM modeling
- Commercial & Residential Drafting

CLARKE MURPHY PRINT

51



www.clarkemurphyprint.com.au

At Clarke Murphy Print, our clients benefit from five generations of printing experience. From humble beginnings in 1985, we've grown to become the innovative market leaders we are today. We love what we do and our service reflects this. Our team of print enthusiasts consists of fabulous people with an eye for detail and a passion for perfection. Our job is to make yours easier.

Our highly sophisticated offset, digital and wide format presses are all in one facility. Our continual investment in the best printing technology ensures our clients enjoy stunning results every time. Design, pre-press, press finishing, warehousing and despatch is all managed under one roof, guaranteeing optimum colour management, one point of purchase and consistent quality across all print formats.

Some printers pride themselves on quality. Others on competitive prices, quick turnaround or customer service. When you partner with CMP, you can expect all this, and more. With Clarke Murphy Print, there are no compromises.

COMPLIANCE COUNCIL

216



www.compliancecouncil.com.au

Compliance consulting experts for all aspects of the construction industry, specialising in Quality, WHS and Environmental Management systems. We assist businesses maximise the potential of their existing management system, or create and implement new management systems.

CONSYSTEX

161



www.consysdex.com

ConsysTex offer advanced patented technologies for the construction industry. Our composite materials and technologies have set a benchmark for vertical formwork. We also offer bespoke systems to cater for any architectural and structural requirements. We are dynamic, innovative and constantly creating solutions and new technologies for the construction industry.

CORELOGIC

127



www.corelogic.com.au

CoreLogic provides property information, analytics and services across Australia, New Zealand and Asia, and recently expanded its service offering through the purchase of project activity and building cost information provider Cordell. With the deepest, most reliable property data in the country, CoreLogic can help drive your business strategy, solutions and revenue growth. We are the number one supplier of property analysis and insights to real estate agents, banks and mortgage brokers, insurers, Government agencies and regulators. With Australia's most comprehensive property databases clients rely on CoreLogic to help identify and manage growth opportunities, improve performance and mitigate risk.

CSIRO

141



www.csiro.au

At CSIRO, we do the extraordinary every day. We solve big challenges and deliver unique solutions for business by bringing together the best minds in the world. We collaborate

with businesses and government to increase competitiveness, reduce risk, expand markets, and develop new industries.

Our new tech and emerging solutions can give your business the cutting edge to help you grow and compete. With more than 5,000 experts and a burning desire to get things done, we are Australia's catalyst for innovation.

We imagine. We collaborate. We innovate.

DECORATIVE IMAGING

106



www.deco.net.au

Decorative Imaging is a specialist powder coater and supplier of building products based on a sublimation powder coating technology.

Decorative Imaging can apply any of our finishes to any aluminum extrusion, making an endless range of architectural and building solutions possible.

Decorative Imaging's range of products includes decking, battens, slats, blades, cladding, louvres and shutters.

Decorative Imaging is an innovative Australian owned family business with a total commitment to the highest standards of quality and service for our customers.

Decowood the stunning timber look that never needs painting!

Contact us on (02) 9726 7726 or visit our website to find out more about our exciting range of products and colours.

DONGYING TOUSIN PRECISION METAL LTD

200



www.china-castings.com

We are professional steel casting manufacturer from China, have our own foundry, CNC machining department and handcraft polishing factory, came into existence from the year of 2007. Our main products include Stainless steel spigots, D clamps, hardware which used for handrail, door & window, bathroom, etc. Materials include Duplex 2205, SS316L, SS316, SS304, etc. Surface treatments include mirror polish, satin polish, electro-polish, etc. Warmly welcome every friend abroad to share the mutual development.

DUROTECH

162



www.durotechindustries.com.au

Durotech Industries was founded in 1977, as a manufacturer and supplier of waterproofing



technologies for the waterproofing industry. Durotech products are used for waterproofing and surface protection in large commercial as

well as residential buildings for sealing of wet areas, roofs, decks and other surfaces.

Our products provide a high quality and durable protection against moisture and weather damage.

Combining the passion, technology and specialist knowledge over the years Durotech Industries continues to lead the

market in promoting and supporting a culture of best practice in waterproofing and constantly providing the most

updated and innovative waterproofing technologies.

This is reflected in Durotech's own philosophy and proven expertise in providing high-quality and durable waterproofing solutions.

We look forward to working with you and meeting your waterproofing needs with quality and excellence.

EASY PAYSIP

74



Easy Payslip

www.easypayslip.com

Easy Payslip allows you to create payslips and process payroll all from your smart phone. Download the FREE 30 Day trial today. Payroll just got a easier.

EMBELTON

59

EMBELTON

www.corporate.embelton.com

The Embelton Group was founded in 1925, and publicly listed on the Australian Stock Exchange in 1957. The company operates in two main industries; timber flooring and noise & vibration isolation, with further manufacturing operations metals fabrication.

Headquartered in Coburg, Victoria, the company services the national market, operating branches in Melbourne, Sydney, Brisbane and Perth, with more than 6,000m² of warehouse space. Embelton also has a number of key distribution relationships for its Engineering vibration control products in UK, Asia and New Zealand.

The company works with leading acoustical consultants, structural design engineers, architects, builders, and installers to design and supply solutions for both noise and vibration control and timber flooring. Its products are found in a number of large to small sized projects across Australia, UK, Asia and the Middle East. Over many years, Embelton has forged a reputation for providing quality, service and engineering innovation.

Embelton is one of Australia's largest wholesale distributors of hard floor coverings, sold through an extensive network of leading flooring retailers as a preferred supplier.

ESCEA GAS FIRES

138

FIRE BY **escea.**

www.escea.com.au

Escea fireplaces represent the best in design, efficiency and innovation. Choose between the double sided, see-through DX1500, which uses Multiroom heat ducting Technology; the DL850 with a 4.5 ENERGY STAR efficiency rating; the perfect replacement gas fireplace, the AF700; or the whisper-quiet, ambient ST900. Alternatively, add ambience and warmth to any outdoor space with an Escea outdoor fireplace. Other features such as multiple fascia and fuel bed options, Zero Clearance, high heat output and Smart Heat app and web controller make Escea fireplaces the obvious choice.

EUROCLASS WINDOWS

191



www.euroclasswindows.com.au

EUROCLASS WINDOWS are an energy efficient window and door specialist company.

We offer to our customers, windows made from high quality European profiles (including REHAU Upvc) that are energy efficient and durable.

By combining advanced materials and technologies we create windows, doors and additional finishing to the highest standard to meet your needs.

EVERGREEN WALLS

217

evergreen
WALLS

www.evergreenwalls.com.au

At Evergreen Walls, we've worked hard to create a solution that allows you to readily add beautiful greenery to any space. Our artificial wall gardens are a great way to provide some additional life to commercial and retail spaces, office buildings, courtyards and hospitals. An artificial garden wall allows contractors, architects, shopfitters, and interior designers to install greenery in a wide range of locations that don't necessarily lend themselves to natural plant growth or maintenance.

Artificial garden walls are very durable, and they deliver a consistency of coverage that's not easily replicated with natural plants. They're also a great way to add greenery to locations that might not typically have plant coverage, such as an indoor reception area,

and the results can be quite impressive. Always green & maintenance free.

EZYPROFILE SYSTEMS

118



www.ezyprofile.com.au

THE EZYPROFILE SYSTEM IS A NEW RE-USABLE TOOL TO REPLACE THE TRADITIONAL PROFILE SYSTEM ON THE BUILDING SITE

RE-USE IT OVER AND OVER AGAIN

The EzyProfile system is a light-weight, profile system made of aluminium, heavy duty plastics and fibreglass. It is extremely easy to use with a number of sliders and screw fasteners to position everything where you need it.

LIGHT WEIGHT AND EASY TO TRANSPORT

The EzyProfile System weighs in at just 23kg which includes 16 stakes, 8 profile rails, 2 tripod centre markers and much more in one easy to carry bag, perfect for moving from jobsite to jobsite.

USE EZYPROFILE ANYWHERE

The EzyProfile can be used on all types of sites whether they are flat, sloping, excavated faces, vertical or horizontal walls.

You can even drill them into rock or concrete!

THE TOOL FOR EVERYBODY

The EzyProfile System is designed by a builder for builders, concretors, surveyors, civil engineers and contractors, plumbers (for slab set outs) and many more with a wide range of applications.

Check out the videos on how to use the EzyProfile System and buy yours online today.

FAME / IPROM

110



www.fame-online.de

FaMe® software suite represents a world leading "state of the art" solution to manage your Real Estate focussing on Lifecycle Management, sustainability, energy efficiency and environmental protection. Included issues like "Green Building" and reducing environment pollution and other aspects of your facilities. Smart Home and Smart City Solution are also available. Over 30 Modules with 23 languages cover all requirements of Real Estate and Facility Management. FaMe® was founded in 1989 in Germany & build-up a Cooperation Network around the world with support centers in several countries.

We are happy to welcome you at our booth #110 at Sydney Build Expo, taking place at Royal Hall of Industries on March 15th & 16th 2018.

For any further information please contact: M.Neumann@fame-online.de

FARESIN FORMWORK AUSTRALIA PTY LTD.

178



www.faresinformwork.com

Faresin Formwork is the leading Italian producer of formwork systems for civil, residential, industrial, commercial, energy building and infrastructural industry.

Faresin Formwork is ready to satisfy specific requirements of Australian construction companies thanks to its complete showroom of formwork systems and its large warehouse for sale and rental, at its domestic branch Faresin Formwork Australia PTY Ltd.

All Faresin Formwork systems are completely developed and produced in Italy. They are known for their high quality, their consistency, the capability to reduce the time of installation and to improve the productivity and the safety, in any construction site. Technical trainings, accurate after sale services and the assistance in site, are always included in all Faresin Formwork programs. The internal R&D Team is always more than pleased to engineer innovative solutions, ready to use, for any customized formwork system, where needed.

FARESIN AUSTRALIA PTY LTD.

13 Rowood Road, Prospect

NSW 2148 – Australia

Phone +61 2 9636 1411

Fax +61 2 9636 1422

info@faresinaustralia.com.au

FARO TECHNOLOGIES

76



www.faro.com.sg

FARO® creates unique value and support operational excellence for our customers by:

- Enabling faster, more accurate, compelling and useable 3D documentation
- Accelerating execution timelines
- Minimizing in field 3D documentation and measurement times
- Shrinking margin impacting scrap and rework costs
- Reducing development risk

FLOOREX PRODUCTS

129



www.floorex.com.au

Floorex serves the Concrete Preparation,

www.sydneybuildexpo.com/



Concrete Polishing, Floor Stripping industries to the full.

We are Australia's most complete supplier of Grinders and Polishers with Diamond tooling, Shotblasters for Concrete and Steel surfaces, Scarifiers, Dust Extractors that really work, and Screed Mixers and Pumps. There will be a great cross-section of these at Sydney Build.

With our specialised tools for applying coatings and screeds, you can expect to get quality tools that are hard to get anywhere else; it's why professionals rely on Floorex.

With our Head office in Victoria, PLUS offices now in Sydney, Melbourne and Auckland, a visit to one of these locations will reward you with being able to see these Machines and tools more readily than ever before. You will love just how quickly your order can get to you with fast despatch, air and road freight connections.

See you at Sydney Build 2018!

FOSROC

80



www.parchem.com.au

Fosroc is an international leader in delivering Constructive Solutions for projects across a broad range of market segments, including transport, utilities, industrial and general buildings.

Our commitment to customer service and technical support is second to none. We work closely with architects, structural engineers, contractors and owners to best understand their requirements and develop a bespoke solution for a construction project, adding value and becoming more than just a materials supplier.

Parchem Construction Supplies is a leading manufacturer and supplier of products and equipment to the Australian and New Zealand concrete and construction markets and is the sole licensee of the Fosroc brand in Australia and New Zealand.

Our range of solutions include:

- Concrete Admixtures
- Concrete Repair
- Grouts & Anchors
- Waterproofing
- Protective Coatings
- Industrial Flooring
- Joint Sealants
- Cement Additives

GECA (GOOD ENVIRONMENTAL CHOICE AUSTRALIA)

212



www.geca.eco

GECA (Good Environmental Choice Australia) is a purpose driven, not for profit that provides solutions for sustainable consumption and production.

We run Australia's only independent, not-for-profit, multi-sector ecolabelling program for sustainable products & services.

Products are assessed against GECA's robust standards by JAS-ANZ accredited auditors. Standards are developed to ensure products have a lower impact on the environment, human health, and have been made in a socially and ethically responsible way.

GECA certification is a sign that buyers can trust.

It's a demonstration of leadership in sustainability and is evidence of world-class best practice in product manufacturing. It gives products a competitive edge, opening up a range of unique marketing opportunities in Australia and overseas.

GECA Certification can contribute to green building programs in Australia and overseas such as Green Star, WELL, LEED and ISCA. Its product database is also linked to many procurement sites across many sectors.

GLOBAL GREENTAG INTERNATIONAL

73



www.globalgreentag.com

Global GreenTag International provides two product certification schemes: LCARate™ and GreenRate™ which assists product selection in a number of categories, including for building and design professionals to procure healthy and sustainable products with graphics and 'nutrition-label' like Product Sustainability Scorecards.

GreenTag currently certifies nearly 1000 products for over 100 companies and was the first ecolabel in the world to implement a unique 'Beyond LCA' life cycle assessment (LCA) and the first ever to provide a 'Net Positive' benefit analysis to certify and rate green buildings and interiors. It is the only sustainable building product related certification scheme approved in Australia by the ACCC.

Some of the world's most iconic brands, including Interface, Polyflor, Laminex, Tarkett/Desso, Dunlop, Knauf, Armstrong, Vertilux, Verosol, CSR, Herman Miller and Schiavello are backed by GreenTag standards, which are recognised in Australia, New Zealand, the US, the EU, Malaysia, South Africa, Africa and SE Asia and in over 70 other countries.

GOOP GUYS

188



www.goopguys.com

Goop Guys are the leading manufacturers of 'Paint on - Peel Off' waterbased coatings for the building industry.

Goop has become a brand unsurpassed in quality by any other coatings of their kind because they do what they say.. Through Goop Guys commitment to formulate superior coatings the demand for Goop coatings is growing rapidly.

Goop@ coatings are waterbased, non-hazardous, non carcinogenic & environmentally friendly making our coatings stand out from the rest. Applied to a myriad of non-porous surfaces including Low-E coated glass, windows, aluminium & PVC frames, bathtubs, benchtops, sealed floors & the list goes on.... If you are looking to protect surfaces during construction - Goop is the clear choice. Visit us at Sydney Build 2018.

GRASS REINFORCEMENT

43



www.grassreinforcement.com.au

We supply an extensive range of reinforced grass products for residential and commercial projects Australia wide

Our grass protection range features Grass Reinforcement Mesh (GR11 & GR14), Turf Reinforcement Mesh (TR4) and permeable paving solutions for trade vehicles, cars, forklifts and heavy emergency and mining vehicles. We offer these premium grass and gravel solutions at the most competitive prices.

We will guide you through each step of your purchase from selecting the right product, quantity and onsite delivery, to installing your mesh and paving systems.

Whether you're looking to park on grass or give your ground protection, we have the complete turf reinforcements and paving systems you need.

GUANGDIAN INDUSTRIAL GROUP LIMITED

145

We supply the nice fresh decoration of flower roses from china. We mainly export to UK. Very nice products for decoration and for gift. Welcome to contact with us: email: pengguang80@yahoo.com mikechina80@126.com

whatsapp:0086-13827728575 facebook:mike.peng.946

HANDYMAN

124



www.handyman.net.au

Handyman is the number 1 DIY magazine in Australia and is dedicated to helping readers improve their home and garden through smart renovations and upgrades.

Each issue is packed with stunning articles to inspire readers to create the home of their dreams, as well as detailed step-by-step instructions explaining how to save money by Doing It Yourself.

Handyman contains all the information DIYers need to know to get the job done, including what products to buy, the best tools to use and the right way to use them, plus handy tips and tricks to save time and money.

Readers can also find thousands of renovating and gardening articles online at www.handyman.net.au, watch hundreds of instructional videos on the Handyman Youtube channel, and connect with over 54,000 DIYers on the Handyman Facebook page.

HERCULES CARPARKING SYSTEMS

215



www.herculescarparking.com.au

Multi-level car stackers are used extensively overseas and 'Down Under' is moving in a similar direction. Hercules Carparking Systems specializes in customised solutions for every conceivable parking requirement. In addition to the day to day functionality of your car parking system, by incorporating or adding this feature to your home, apartment or commercial premises, your property value will increase substantially, certainly beyond the cost outlay for the system. HERCULES CARPARKING SYSTEMS - CREATING CAR PARKS OUT OF THIN AIR

HOVERSCAPE | DRONE SERVICES

165



www.hoverscape.com.au

Helping business realise the potential of drones through our safe, professional and tailored drone services.

What sets Hoverscape apart is our reputation as one of Australia's longest standing, safety accredited and experienced drone companies. We don't believe in a one-size-fits-all approach; therefore, each project is specifically tailored and executed in the highest quality per your



requirements in-line with both aviation and government rules and regulations.

Key Benefits

- Our stringent safety protocols entitled us to receive clearance by the Civil Aviation Safety Authority (CASA) to undertake projects from a wide range of locations and conditions.

- Safety is at the forefront of all we do including strict safety procedures and comprehensive Safety Management Systems, WHS and SWMS.

- Our customer service team is on-hand to assist all clients throughout project process from consultation and pre-implementation through to delivery and after sales care.

- We are highly qualified and experienced across a diverse range of industry projects including building and construction, marketing, asset inspection and survey.

- Our large team and fleet allows for flexibility and movement with regards to keeping pace with changing requirements.

HP DESIGNJET

38



www.hp.com.au/graphicarts

HP creates technology that makes life better for everyone, everywhere. Through our portfolio of printers, PCs, mobile devices, solutions, and services, we engineer experiences that amaze.

Since inventing the pen plotter in the late 70's, HP has been a leading innovator in large-format printing. Today, HP DesignJet products offer fast speeds, high-quality output, copy and scan capabilities, and web-connectivity features that allow professionals to access and print projects from wherever work takes them.

IFE ELEVATORS / CRANETEC

134



www.cranetec.com.au

Cranetec has become the first choice for sales, repairs and maintenance by some of Australia's leading companies.

For over 18 years, Cranetec has been instrumental in setting a new standard for quality assured maintenance, scheduling and repairs.

Using systematic, point by point maintenance and servicing procedures, Cranetec can ensure your equipment is always maintained at the optimum service and safety levels with full compliance to the current Australian Standards and Legislation's.

IGNITE

169



www.igniteservices.com

Ignite (ASX:CND) is re-imagining talent services, providing specialist recruitment, on-demand talent and outsourced people services designed to meet the changing world of talent sourcing and management. Using deep industry expertise, the company provides the best technical, cultural and strategic alignment of candidates to clients to produce lasting value for both, and in so doing, sets the stage to ignite greater potential.

With around 300 employees, Ignite operates in eight offices across Australia, as well as in China under the Lloyd Morgan Executive brand. The company formerly traded under separate brands including Alliance, Candle, JavIT, Lloyd Morgan, SouthTech and The One Umbrella.

IHITA FORMWORKS PTY LTD

198



www.ihitaformworks.com.au

Ihita Formworks Pty Ltd. is a leading prime supplier and solution provider for complete formwork system.

Our supplies include all system formworks like Aluminium Formwork, Steel and Ply Formwork, Structural Plywood and all formwork accessories.

We are currently operating in India, Jamaica, France, Singapore, Malaysia and Australia.

This is indeed a proud moment for us at Ihita Formworks have completed many projects in Multi-storey buildings, Residential Apartments, Residential Villas, Bridges

The company Offers Differentiated Services & solutions with 3D modelling Design Team for an error free, time saving and easy understanding designs.

Ihita formworks has a vast Production capacity of producing 15000sq.m Aluminium formwork materials per month at the factory.

We have designed more than 2 lakh sq. m of formwork designs and produced 1lakh sq. m formworks.

Ihita formworks end-to-end operation solutions enable our clients to enhance agility and achieve saving time on construction with minimum maintenance. Our system can be reused for 250 times.

The company backed by young entrepreneurs in creating a very strong and vibrant team by executing high quality finish and perfection in its services. Because "better forms make better building".

INGAL CIVIL PRODUCTS

62



www.ingalcivil.com.au

IngAl Civil Products is the premier manufacturer and supplier of car park vehicle barriers in Australia and New Zealand.

We source Australian steel, and manufacture right here in Sydney.

We have a large range of patented barrier systems catering for a variety of applications. With in-house design and manufacturing, we can work with your design team to tailor a high-strength solution for your project.

Our barriers are tested and compliant with AS/NZS1170.1 and AS/NZS2890.1, and are designed to be fitted with integrated anti-climb mesh in line with AS/NZS1657.

Our objective is the protection of people, plant and buildings.

JINAN AIMI AUTOMATION TECHNOLOGY CO., LTD

180



www.aimigrating.com

AIMI aluminium grating has grown from what was an option to mild steel products catering to different environment requirements, to a product that offers a distinctive and versatile design element now featured on a number of leading edge projects. It provides access to a building while being integrated into the overall design of the building.

JOTUN AUSTRALIA PTY LTD

98



www.jotun.com

The Jotun Group is one of the world's top 10 leading manufacturers; Jotun supplies a complete range of conventional and sophisticated coatings, including environmentally friendly products in four sectors: Decorative, Marine Protective and Powder coatings.

Jotun is a leading manufacturer and supplier of high performance coatings, specialising in corrosion protection and passive fire protection of steel. We offer a wide range of products coupled with expert advice and guidance in the following business areas:

Protective Coatings for Heavy Industries i.e. LNG Refineries, Factories, processing mills. Offshore and onshore facilities and structures i.e. Drilling Rigs and Fixed Platforms. Storage tanks (Internal & External linings), mining

and processing plants as well as shipping, Smelting, Chemical, Petrochemical, Water and Sewerage.

The group has 71 companies and 40 production facilities on all continents. In addition, Jotun has agents, branch offices and distributors in more than 80 countries. Jotun's operations cover development, production, marketing and sales of various paint systems and products to protect and decorate surfaces in the residential, shipping and industrial markets. Jotun has 8,000 employees with its head office is located in Sandefjord, Norway.

KING PAINTING SPECIALISTS PTY, LTD.

120



www.kingpainting.com.au

King Painting Specialists Pty, Ltd offers high quality painting and decorating services to both residential and commercial clients across the greater Sydney metropolitan region. Whether a project is interior and exterior, we pride ourselves on providing highly personalised service to ensure customer satisfaction. This satisfaction is reflected in many referrals we receive from pleased clients, resulting in the exciting growth we are seeing. Large or small, simple or complex, we can handle any project from initial design to final walk-through. Our expert technicians are knowledgeable and experienced, able to address every facet of the job. We are fully licensed and insured, and customers will not find a better painting option in the Sydney area.

KINGSPAN

102



www.kingspan.com/au/water

Kingspan prides itself on longevity, experience, continued innovation and unrivalled customer service. For over 80 years, we have manufactured and supplied long lasting, quality, water tanks and accessories for Australian homes and businesses. Today, Kingspan continues to be a market leader and trusted source of expert advice in rainwater harvesting and storage solutions for the residential, commercial and rural sectors and wastewater. Our tanks range from 500 litres to 2.3 million litres and are proudly Australian made.

KONIG AUSTRALIA

171



www.konigaustalia.com

König Australia distribute for the repair and maintenance of surfaces made from wood, plastic, stone and metal a range of



high-quality products bearing the "Made in Germany" seal of quality. The product range comprises diverse fillers, touch-up materials like pens, pigments and dyes with spray lacquers sealers from deep matt to high gloss.

We supply worldwide the parquet and laminate manufacturers, door and window sectors, furniture trade, carpenters, restorers, stone masonry companies, hotels, facility management, including the automotive industry, forwarding companies, boat and yacht building industry plus the private consumer.

König Products are used by Tradesman and Professionals across Australia & New Zealand that are repairing and Fixing all types Surface Damages in Homes, Apartments, Offices and Hotels.

We provide the highest quality products to help you to Repair & Maintenance on surfaces such as:

- Furniture Surfaces
- Kitchen benchtops
- Flooring
- Stairs
- Windows
- Doors
- Tiles
- Sanitary Ceramics
- Natural Stone
- Caesarsstone

KORDON TERMITE MANAGEMENT SYSTEM

65



www.environmentalscience.bayer.com.au/Kordon
Kordon® Termite Management System from Bayer is a flexible and durable laminate sheet that is applied to critical areas of your home during the construction process, in order to protect your home from termites trying to enter through underground tunnels. Kordon Termite Barrier achieves this through:

Providing a physical and chemical barrier between your home and the soil beneath.

Kordon is comprised of two layers of robust flexible laminate, with a chemical called Deltamethrin in between, which is highly repellent to termites.

Kordon is installed under your home during the construction process and layered into areas where termites may seek easy access to your home.

Termites, unable to enter your home via underground means, are forced to travel above ground where their over ground tunnels are visible.

This ensures termites will be detectable by a Bayer Accredited Pest Control professional during the annual inspection where the appropriate steps can be taken towards

www.sydneybuildexpo.com/

protecting your home from termites.

Bayer offers an exclusive \$1M Bayer Protection Program warranty to protect you against termite damage.

LEAF FREE GUTTER GUARD

183



www.leaffree.com.au

Leaf Free Gutter Guard™ is the best gutter protection system available. It excludes leaves and debris from roofs, gutters, valleys and downpipes by creating a "ski-slope".

The UV resistant, anti-corrosive, small aperture mesh has the highest CSIRO flammability index rating and a patented high bond 3M adhesive to make installation secure, hassle-free and fast. There is no drilling holes and no brackets or screws as with many inferior systems.

Leaf Free Gutter Guard™ can easily be fitted to tile, corrugated and Trimdek metal roofing, phone us on 1300 456 678

LINYI CHANTA INTERNATIONAL TRADING CO.,LTD

25

CHANTA GROUP

www.chantawood.com

Linyi chanta international trading co.,Ltd was founded in 1995, which mainly produces film faced plywood, fancy plywood ,commercial plywood,venner,lv,melamine,mdf and door skin. Our factory covers an area of 27,000 square meters with 10 plywood production lines and 100,000cbm capacity per year.

LINYI JIAHONG INTERNATIONAL TRADING CO.,LTD

187



www.xinhaiwood.com

Linyi Jiahong Building Materials Co., Ltd was founded in 1999, which mainly produces film faced plywood, commercial plywood, melamine laminated plywood, fancy plywood, venner, MDF, light steel keel and building materials. Our factory covers an area of 60,000 square meters with 50 plywood production lines and 100,000CBM capacity per year.

LORIENT

75



www.lorient.com.au

With over 37 years of accumulated knowledge Lorient has an international reputation for designing and manufacturing a wide range of innovative sealing solutions for the containment of fire, smoke, sound, weather and the conservation of energy.

We are proud to offer products that are designed to enhance life safety, preserve property, improve quality of life in the built environments that we inhabit.

Based in Sydney, we locally manufacture a comprehensive range of high performance Intumescent Fire Dampers and distribute Lorient architectural seals, intumescent fire seals, medium temperature smoke seals and acoustic seals to the Australian and New Zealand markets.

Our architectural range incorporates a variety of complementary door sealing products including perimeter seals, automatic drop seals, threshold plates plus much more.

Manufactured to the highest quality, Lorient solutions have been designed and fully tested for a host of different sectors including residential, commercial, industrial and public buildings.

By keeping abreast of technical developments, changes to regulations & standards we ensure we maintain the highest level of expertise, and always ready to assist and provide accurate and appropriate advice

Come and visit us at stand 75.

LOWES CORPORATE WEAR

147



www.lowescorporatewear.com.au

Lowes Corporate Wear can assist with all your Uniform requirements from Workwear through to Office attire with both embroidery and screen-printing options available. A wide variety of styles & colours available for both Men & Women, it's important to define your brand and create an image unique to your company. We look forward to establishing a successful business partnership with your company. Together we can deliver a fresh and inspiring attitude to your customers and staff. Lowes has a major advantage over other Corporate companies, with 195 stores nationwide your staff can be easily measured and fitted at Lowes by our experienced staff. Please feel free to contact our Sales Team for more information.

M & M INDUSTRIES CO., LTD.

172



www.mmsteelwire.com

M&M has built a stable manufacturing and supplying system of various types of galvanized wires, reinforcement meshes, rebar tie wire, rebar tying gun and construction products, which can meet customer's demand to theutmost extent.

M.B EXPORTS LIMITED

125



www.mbxports.com

M.B EXPORTS LIMITED" is a leading manufacturer & Exporter of Dewatering pumps and Quick Couplings (Miller, Bauer, Italian, Perrot/Cardon type) in India. Our company has been certified with ISO 9001: 2008, ISO 14001: 2004 and OHSAS by BSI.

SITEOFFICE.MOBI / MADAKE PTY LTD

193



www.sitemobi.com.au

We specialise in providing project management services and developing construction software.

We have a passion for improving our industry, and our software draws on the expertise of the team who combined have over 100 years of global experience in the building, civil construction and mining sectors.

The functionality of our product has been designed around our core beliefs of simplicity, efficiency and sustainability.

MASTERWALL

207



www.masterwall.com.au

MASTERWALL – Australia's leading Codemark Certified energy efficient cladding system specialising in insulative building envelope technologies for residential & commercial projects. Such benefits include architectural integrity & design freedom, energy efficiency, superior thermal performance & speed of construction.



@SydneyBuildExpo | #sydneybuild

MEND SERVICES

196



www.mendservices.com.au

At Mend Services "Mend" we are about helping your organisation with the provision of a comprehensive range of workplace health, safety, rehabilitation and training solutions. It is about making your workplace a healthy environment and more importantly a safer environment. It is about managing your work place risk and achieving positive return to work outcomes for your employees and ultimately saving your organisation time and money. Mend has been providing workplace rehabilitation, injury and claims management, training, employee assistance programs, preventative health programs and medico-legal services for over 25 years.

Mend provides health solutions to businesses and individuals. Our services are of high quality through our streamlined processes, whilst tailoring for individual requirements whether you are a small or national business.

Mend is accredited with SafeWork NSW and specialises in the delivery to the Building, Construction and associated supply and service industries.

Mend Services Pty Ltd employs a highly dedicated qualified and experienced multi-disciplinary team of allied health professionals, return to work co-ordinators, rehabilitation consultants and administrative staff. Our offices are conveniently located in Glebe, Campbelltown, Newcastle and Wollongong, along with our interstate offices.

MITSUBISHI HEAVY INDUSTRIES AIR-CONDITIONERS AUSTRALIA

177



www.mhiaa.com.au

With over 130 years of engineering excellence, Mitsubishi Heavy Industries Air-conditioners Australia Pty Ltd (MHIAA) is a major supplier of commercial and residential air conditioning products in Australia and New Zealand.

MITSUI CHEMICALS ASIA PACIFIC LTD

149



ap.mitsuichem.com

Through innovation in materials, processing and applications technology as well as understanding customer needs we provide materials, systems and services that improve global environment, generating socio-economic corporate value thereby widely contributing to society.

MODERN/MANUFACTURED FRAMELESS GLASS SYSTEMS

87



www.mfgs.com.au

MFGS design, fabricate and supply the highest quality frameless

glass hardware for the following applications and more:

Shower Folding Doors Balustrades

Pivot Doors Stacking Doors Pool Fencing

Sliding Doors Canopies/Facades Pool Gates

MODULAR WALLS

30



www.modularwalls.com.au

With over 30 years manufacturing experience in composite panelling, we invented the first free-standing modular wall 16 years ago. Since then, we have continued to innovate and expand our product range to include external boundary walls and fencing, retaining walls, impact resistant roadside barriers and high-performance sound absorbing panels for both internal and external acoustic requirements.

Our composite post and panel solutions are Australian designed and manufactured to strict international ISO 9001 quality standards, with leading-edge manufacturing processes that reduce emitted and embodied carbon by up to 80%. Our product applications span across residential, commercial and civil industries to government departments, with over 16,000 successful projects across Australia, New Zealand, USA and Europe.

Built on the foundations of good design, exceptional quality, reduced carbon footprints, lean manufacturing and unprecedented client support, ModularWalls prides itself on being an Australian manufacturing success story.

MULTINAİL

164



www.multinail.com

Multinail has been a respected Australian business since 1979, leading the industry in the production of light weight, pre-fabricated timber truss and frame systems, products and solutions.

Multinail's technology centre is based on the Gold Coast in Queensland, Australia. The site is made up of a 1.5 hectare factory space and more than 1500m² of office space.

The technology centre is home to the design, testing and manufacturing of structural metal building products, the development

of specific machinery for the timber truss industry, structural engineering department, software development and technical support.

NEARMAP

93



www.nearmap.com.au

Nearmap brings the real world to you.

We capture, manage and deliver the most frequently-updated location content in the world, allowing businesses and governments to explore their environment easily.

With Nearmap, organisations unlock opportunities that consistently inform decision making and transform the way they work. Delivered within days of capture our imagery is much higher resolution than satellite imagery and shows changes over time. Nearmap helps users save time and money, reduce site visits and make better informed decisions with current, clear imagery.

Nearmap is delivered through our web-based MapBrowser or accessed via third party applications.

NEXVIA

60



www.nexvia.com.au

Nexvia is an Australian technology company and developer of groundbreaking construction management software, Orbis Pro. The cloud-based ERP system helps businesses of all sizes streamline their project management processes to improve efficiency, accountability and communication. From financial project reporting, tendering and estimating. To sales, factory and site management. Through to project tracking, stock control and time tracking. Orbis Pro delivers streamlined tools that will transform your business, all on one user-friendly platform.

NON-DRILL POST AND HANDRAIL SYSTEM

192



www.nondrill.com.au

NON-DRILL is a post and handrail system that connects to existing 2.5, 5 and 10T lifting anchors on precast products... "NO DRILLING"! Suitable for RE Walls, Culvert Cells, Chain-wire Fencing, Bridge Decks and Parapets. Place on Jersey Barriers for Secure Screens, Hoarding, Road Signs, Gawk Panels. Quick and easy to use, this handrail system avoids drilling and exposing steel, decreasing the risk of Concrete Cancer occurring.

Another option: prior to a concrete pour, simply set additional recess plugs, in-situ or

in precast structures, where handrails will be required (e.g. edge protection during the construction of high-rise buildings). Also suitable for full height screens. Non-Drill can be used as a temporary or permanent handrail.

Dropdown posts are available, these allow easy adjustment of handrails on RE-Walls as backfill progresses.

Coming soon- clutches to suit the 1.3T lifting anchor, and the Hairpin anchor.

Come visit us at Stand 192. The NON-DRILL Team.

OAKFAIR INDUSTRIAL LTD

104



www.oakfairladder.com

Oakfair Industrial Ltd was incorporated as a private limited company under the companies Act of Hongkong in 1990. Oakfair is a professional manufacturer and trader in designing and producing various types of ladders for industrial and household purpose, scaffolding products for construction industry, aluminum & Zinc die casting products. Oakfair is certified to MS ISO 9001:2000 Quality Management System. We manufacture high quality ladders to supply the domestic and the international market. The company strongly emphasizes research and development in its business growth. Oakfair is committed to be the professional manufacturer and trader of access equipment guided by the following issues: I Provide high quality products and services; I Meet market need and customer satisfaction; I Meet delivery accuracy; I Providing skill for continuous improvement. I All our products match with ANSI, CSA, European standard and Australian standard.

OZCAD VECTORWORKS

71



www.ozcad.com.au

Designers choose Vectorworks® Architect software because it provides a solution that supports the creative process rather than replacing it. From 2D and 3D to BIM and beyond, Vectorworks Architect delivers a robust suite of capabilities that will enhance your workflows and improve your design process. It is the industry's only modelling, drafting, and documentation software built with BIM at the heart of the design process.

With Vectorworks Architect, your firm will benefit from best-in-industry building information modelling tools, with flexible parametric objects that help you create a virtual prototype of your designs, with as much detail as needed. Edit and analyse your model whilst simultaneously generating interactive schedules, and join more than half a million users around the globe who transform the



world with Vectorworks every day.

OzCAD is the sole authorised distributor of Vectorworks in Australia. They specialise in selling and supporting this exceptional CAD software and produce a localised version that is tailored for Australian practice.

OZROLL

184



www.ozroll.com.au

The Ozroll Group is an Australian manufacturer; family owned with a passion for developing environmentally friendly home improvement products. Great emphasis is placed on sourcing as many materials as possible from within our country, to ensure a high quality finish, while maintaining control over each and every process.

Ozroll already boasts a national work force in excess of 200 personnel, operating from facilities in South Australia and Queensland. Plus, offices in Germany provide a base for export, where Australian products are distributed into the European market.

With the intention of diversifying at every opportunity, The Ozroll Group is already a well respected participant in an array of markets, including premium grade Aluminium Roller Shutters, Aluminium Louvre Shutters and Screens, Plantation Shutters, Paints, Renders, Textures, Roof Coatings, Solar Hot Water and PV components for domestic or commercial use.

PATHTECH - DRUG DETECTION

133



www.pathtech.com.au

Pathtech are an Australian owned company with more than 30 years' experience in supplying workplaces, government departments, scientific and forensic communities with high quality products, including drug and alcohol testing devices. They provide cutting-edge solutions tailored to help meet customer's needs.

Pathtech are Australia's largest supplier of saliva detection devices. The DrugWipe is used by Police in EVERY jurisdiction for roadside drug testing nationally. The Pathtech drug detection product ranges are designed and manufactured in strict compliance with the highest clinical standards.

By focusing on customer service and their strong global manufacturing relationships - this makes Pathtech the trusted choice.

PERFECT HIRE

146



www.perfecthire.com.au

"PERFECT HIRE™ are a labour hire company providing skilled labour with tools. If you work in the construction and building industry, then you know that your equipment and labour are some of the most important things to take into account. However, the cost and time involved with maintaining, repairing and regularly servicing your tools, as well as the difficulty of finding skilled and reliable labourers can add up. That's where PERFECT HIRE™ comes in. Based in Marrickville, we offer both equipment and labour hire for construction projects all across NSW.

Labour & Equipment Hire for the Construction Industry

Looking for experienced labourers who come with all the right tools? Here at PERFECT HIRE™, our professional workforce and skilled tradesmen are qualified to undertake any construction task you have in mind. Head to our Team Page to find out more about our skilled labourers."

PHD GROUP AUSTRALIA

135



www.phdsydney.com.au

Leading suppliers in architectural pre-hung doors and timber mouldings. We ensure the highest quality craftsmanship providing bespoke entry doors, pre-hung doors supplied hung in the jamb and prepped for all hardware. Our timber mouldings range is endless with the ability to match or create any profile. We also offer on-site priming to make your job even easier!

PLANGRID

199



www.plangrid.com

PlanGrid is the leader in construction productivity software. Used on more than 500,000 projects around the world, PlanGrid's value extends over numerous phases of construction, building a massive and accurate history of every jobsite through everyday use that creates a data-rich record set at turnover that is essential to long-term operations. PlanGrid is the first construction productivity software that allows contractors and owners in commercial, heavy civil, and other industries to collaborate easily from their mobile devices and desktop, managing blueprints, specs, photos, RFIs, field reports, and punch lists.

PlanGrid is used in more than 70 countries by thousands of customers including DPR, Granite, NVIDIA, Target Corporation, and Tutor Perini.

PLANRADAR GMBH

91



www.planradar.com

PlanRadar has created a cloud based solution for construction documentation, task and defect management. It consists of a web app and native apps for all kind of smartphones and tablets to record tasks and defects on and off site in a cost- and time-saving way. The system is easy-to-use, available for all mobile platforms and browsers. Users save on average seven working hours every single week. Companies using PlanRadar report having a ROI of more than 900%.

Key Benefits:

FREE FOR RECIPIENTS OF ORDERS

UNLIMITED STORAGE

FREE SOFTWARE UPDATES

FLEXIBLE LICENSING

FOR ALL DEVICES

PlanRadar is available for Smartphones, Tablets and on the Web.

Export all data (Excel and PDF reports, images, voice memos) at any time to your local storage.

Upload PDF and image plans. Updates of plans are possible too!

Always view your latest completion level of all defects and orders at a glance via visual results of the stats.

Clients and contractors are immediately notified within PlanRadar as well as via e-mail about changes and new information.

Filter functions enable you to selectively view relevant data and to save your preferred settings.

PLASMACEM

68



www.plasmacem.com

PLASMACEM produces the formliners for the architectural concrete. Our products are more request for the infrastructure walls, containment walls for train lines or highway, for industrial buildings, for commercial center and directionals building.

Our best clients are : Architects, Ingeneering team, infrastructural builders, precasters.

PREMIER CONSTRUCTION SOFTWARE

115



www.jonaspremier.com.au

At Premier, we challenge the status quo and think differently so we can provide a software platform that empowers construction companies to work smarter. Our all in one, cloud solution provides accounting, job costing, project, document and drawing management designed for automation and collaboration to help make lives easier.

PRO9 GLOBAL PTY LTD

92



www.pro9.com

Pro9 Global is an innovative Australian company that manufactures prefabricated, precision building systems that have the potential to reduce building costs and construction timeframes. Pro9 Global's modular construction systems are suitable for a range of building applications. The low cost, prefabricated building systems have the potential to significantly improve the speed of construction, quality of the build, and the energy efficiency and liveability of the building. Pro9 Global's Structural Wall System is multi-storey load bearing. The wall system consists of four key components - steel framing, external proprietary ProBoard (magnesium sulphate cement board) polyurethane core and patent pending interlocking system. The steel frame and outer layer of 'ProBoard' is filled with polyurethane, which is hot injected under high pressure to create a relatively lightweight, but strong, wall with high energy saving properties.

PROMAT AUSTRALIA

131



www.promat.com.au

Promat Australia is a subsidiary of the Etex Group of companies, a global organisation with presence in more than 42 countries across all continents and employing over 15,000 dedicated people.

We are recognised experts in passive fire protection systems with extensive technical knowledge and international experience in the fire protection field.

From our headquarters, manufacturing and research facilities in Adelaide supported by our national sales and distribution network, we supply the widest range of fire-resistant products and passive fire protection systems in Australia, including PROMATECT® boards,



CAFCO® sprays and intumescent coating systems, PROMASEAL® fire collars and fire stopping systems.

PYROTEK

151

Pyrotek.

www.pyroteknc.com

Established in Australia in 1972, we have worked hard to design and manufacture a wide variety of materials for environments where noise reduction is required. By utilising our in-house engineering services, we are able to produce customised soundproofing plans to meet your unique noise reduction needs.

Our aim is to help you realise improved cost savings by delivering a level of quality that is scarcely found in other offerings. Our product range is designed to solve common noise and vibration problems found in industries such as: construction, automotive, marine, and residential environments.

The Pyrotek R&D team are continually working on new ways of tackling the problem of noisy environments. The ongoing goal of our specialist engineers is to create advanced materials and innovative products which anticipate changing customer needs. Our expertise is reinforced by the strong ties we maintain with strategic partners. Add to this our state-of-the-art production facilities, which are ISO Quality Assurance Standards certified, and it's no wonder our noise proofing solutions deliver on quality and price time-after-time.

RED CARTEL

20



www.redcartel.com.au

Red Cartel is one of Australia's leading 3D Animation and game development studios with over 16 years experience servicing the Gaming and Advertising industry's, specializing in creating dynamic visual content for Gaming, Virtual Reality and Augmented Reality. We deliver cost effective graphics and application solutions including Virtual Reality development, Cinematic Sequences, Mobile applications, Augmented Reality and Casino/Club animated graphics.

REGUPOL ACOUSTICS & VIBRATION

130



www.regupol.com.au

Regupol (Australia) Pty Ltd is the Australasian arm of BSW GmbH, manufacturer of the global acoustic and vibration control brands Regupol and Regufoam. Regupol provides access to these market-leading ranges of impact sound, acoustic and vibration control systems, delivering high performance solutions at competitive prices. With more than 30 years experience in working with all levels of the construction supply chain, Regupol has earned a reputation that is cemented by a proven track record in the full range of development areas.

R.O.C. ESTATE EXHIBITION EXCHANGE ASSOCIATION

208



www.eeee.org.tw

The R.O.C. ESTATE EXHIBITION EXCHANGE ASSOCIATION was established in 2013, we conduct the first "Taiwan International Estate Expo2015" during June 12th to 15th in 2015 and also in 2016, 2017, invite several domestic and overseas estate companies, which were Taiwan Real Estate, Construction Materials and also International Real Estate. to join our events.

The driving force is mainly due to since 2013, purchasing houses were limited by statute in Taiwan, therefore, lots of investors invested the property overseas and we can help them to sell through exhibition.

Now, our Association is gathering more than 150 domestic members, more than 200 overseas estate partners, we're also welcome more and more estate companies to participate our event in Aug 2018.

RODNEY STEVENS ACOUSTICS PTY LTD

137



www.rodneystevensacoustics.com.au

Rodney Stevens Acoustics is an acoustic consultancy firm providing environmental noise assessments and solutions Australia wide. Being a team, we understand the importance of client communication throughout the entire engineering process.

In addition to performing the necessary measuring and analysis while conducting acoustic assessments, we provide bespoke acoustic solutions to meet the needs of each individual client.

Rodney Stevens himself is a recognised

specialist in acoustics and in his tenure has solved acoustic problems for individuals, businesses and major companies since 1975.

Rodney Stevens Acoustics specializes in Acoustic reports for Councils, Building Industry and Hospitality.

ROTHOBLAAS

126



www.rothoblaas.com

Rothoblaas is an Italian multinational – with origins in the Alpine region – a leader when it comes to the development and distribution of highly technological solutions within the wood construction sector. Rothoblaas is known for its technical skills and professionalism, it represents a reliable partner for all design or on-site technical requirements within the timber construction sector. Developing most of its very own products, from the concept to the solution up until its market launch, technicians and product experts work on the design of all fastenings, waterproofing, airtightness or fall protection systems to be able to offer a comprehensive solution. Rothoblaas' role is to develop and offer solutions to improve timber structures, by means of research and development of technical products which aim to improve the quality of life of the users and environmental sustainability for everybody. Rothoblaas offer includes personalised support to find solutions which are perfectly suited to the customer's requirements. We are currently present in 28 countries, with 10 distribution centres. Rothoblaas currently has 270 employees and a constantly growing sales network.

company is Shandong Toplong machinery Co., Ltd. We can produce the steel grating, Stainless steel grating, Aluminium bar grating, and FRP gratings; Steel ladders, and referring railing system. These products are used in such industries as petroleum and chemical, port, power, transportation, paper-making, medicine, steel and iron, food, municipality, real estate, manufacturing, etc. Have been exported to USA, Canada, Germany, Italy, Australia, New Zealand, South-east Asia, Middle East, Japan, South-Korea, Trinidad, Singapore and so on.

Also, we can design and manufacture most of kinds of metal products, OEM will be accepted.

We will be creating a resplendent future with you and warmly welcome worldwide customers to patronize and cooperation with us.

SHANDONG JINTELI NEW MATERIALS CO., LTD.

179

JTL QUARTZ

www.jtlmaterial.com

Direct factory produce the quartz stone and kitchen quartz counter top with hundreds of the colors design and max sizes in 3250x1910mm in thickness from 12mm to 30mm

SHANDONG WOODHOME TRADING CO.,LTD.

24

CHANTA GROUP

www.chantawood.com

Shandong Woodhome Trading Co., Ltd was found in 1995, which mainly produces film Faced Plywood, Fancy Plywood, Commercial plywood, Vanner, LVL, Melamine, MDF and Door skin. Our factory covers an area of 27,000 square meters with 10 plywood production lines and 100,000CBM capacity per year.

SILVADÉC

128



www.silvadec.com

Established in France in 2001, Silvadec has been the first company to manufacture wood composite in Europe. After more than 15 years of experience on the French and the European Market, Silvadec is considered as the leader and the reference on its sector.

The company markets a wide range of high quality decking, fencing and cladding products

SAI GLOBAL

170



www.saiglobal.com

SAI Global, a provider of integrated risk management solutions, assurance and property services, helps organizations proactively manage risk to create trust and achieve business confidence, growth, and sustainability. The company has global reach with locations across Europe, the Middle East, Africa, the Americas, Asia and the Pacific.

SHANDONG ADDISION TRADE CO., LTD

17



www.addision.cn, www.sdtlm.com

Shandong Addision trade co., ltd is located in Shandong province, China, whose sister

@SydneyBuildExpo | #sydneybuild

www.sydneybuildexpo.com/



for the domestic and the construction industry. All the products are 100% Made in France, eco-friendly and recyclable.

Silvadec has been working on worldwide renown projects such as the Barcelona Airport, the Hotel Zabeel Saray in Dubai, the Montparnasse Tower in Paris and many others.

Today, the company is targeting the Asian / Pacific markets with a lot of ambition and motivation!

SIMMONDS LUMBER

174



www.simmondslumber.com.au

Simmonds Lumber is a premier Wholesaler of a wide range of timber products for the housing industry, commercial construction, home renovations and industrial markets. Simmonds Lumber are a growing global player in timber and related products. Simmonds Lumber were the first company in the world to use DNA technology to certify legality and provenance of timber exported from Indonesia. The Simmonds Lumber name is renowned for quality, reliability, professionalism and customer satisfaction making Simmonds Lumber the right choice in wholesale timber.

SMARTEST HOME

66



www.SmartestHome.com.au

Smartest Home is founded by a Group of Network and Industrial Control systems engineers with more than two decades of experience in automation and information technology.

With the two fields of automation and IT dominating the industries for many years, we decided to focus our knowledge on the smart home industry in order to provide the most advanced and best possible solutions for Australian homes.

Australian owned Company based in Sydney and Perth, providing services Australia wide. Our Smartest Home solution provides design, implementation and Technical support to all construction Companies, Developers, builders, Architects, Electricians and all Australian households.

In addition to our Smartest Home solution we also offer Smartest Home online shop in which consumers can benefit from our competitive retails price for a range of smart home products.

Our mission is to build the Australian smart homes of the future which will be safer, more comfortable, more environmental friendly and will bring more leisure time and peace of mind into the householder's everyday life.

www.sydneypexpo.com/

SMARTROLL

77



www.smartroll.com.au

The SMARTROLL recessed magnetic toilet roll dispenser, celebrates form and function, making it the perfect complement to any modern bathroom design.

Bring your bathroom vision to life seamlessly, by selecting a SMARTROLL dispenser

SNAGR

67



www.snagr.com.au

Enterprise Level Progress Monitoring & Quality Assurance System

SnagR is designed to monitor the progress of complex projects, providing the easiest way to capture field data, automate reporting and visualise your processes.

SUMMER

111



www.spring-tap.com.au

SPRING was found and located in Hayward, California USA.

Our partner factory was established in 1991 in Kaiping City, Guangdong – one of the biggest and famous production base for taps and fittings in China.

We specialize in sanitary products, bathroom accessories, ceramic sanitary ware, and bathroom cabinets.

To meet different region standards our products are certified with

CUPC, NSF, AB1953, WaterSense for North America and Watermarks, WELS for Australia and CE for the European market.

Our brand values are quality, design, technology and sustainability. Therefore, as a company that delivers water to residential and commercial buildings and as environmental concerns have risen, we have made our number one priority to accelerate the transition to a better sustainable ecosystem by creating innovative products in design and technology. Our diverse selections of quality kitchen and Bath products as well as accessories are design to meet different standards as well as customer satisfaction.

We want to be your supplier. It will be a good memory to have business with your sincerely company.

SQUARE CIRCLE FORMWORK AUSTRALIA

53



www.squarecircleaustralia.com.au

Square Circle Australia is the newest international office of the Square Circle Formwork Company located in Linyi City, Shandong of China.

Our specialities are in the development and manufacturing of innovative patented formwork products such as our PP plastic plywood, column clamps, circular column formwork, square/rectangle column formwork and other special formwork systems (Curved walls, core shafts, customised forms)

We look forward to working with and serving the Australian construction industry so you may all save time and money on your construction projects.

SUNLED

175



www.sunledkorea.com

SunLED has been working in LED Lighting field for more than 5 years. We are now supplying LED Panel lighting & LED living room lighting & LED Highbay lighting to world wide.

TAKAGI CO., LTD.

142



www.takagiwater.com.au

A leading company of water solution products with the No.1 market share in Japan.

Since 1961, Takagi has strived to the bettering of society by "providing people with a comfortable and affluent life." With its corporate slogan, "Designing Water," Takagi is expanding globally to provide customers all over the world with this new standard and is now prepared to enter the Australian market.

For its most notable works of water filtering products, Takagi has now 1.3M registered consumers. Made in Japan at high quality, the product's ease of storing, use, and maintenance has contributed to its rising popularity. The industry's first-ever Built-in water filter tap received the "Parenting Award" in Japan which honours products that make parenting easier.

TEK TILE

31



www.tekile.com.au

R-Tile is the most amazing revolution to hit the Australian flooring scene since concrete!

As a member of the Brian Cummins Group, Tek Tile Australia offers a complete end to end solution for Commercial and retail fit outs.

As the exclusive Australian distributor of the R-Tile range of commercial and retail interlocking floor tiles we are able to offer an excellent alternative to traditional floors such as ceramics, carpet and sheet vinyl.

The R-Tile commercial and retail interlocking floor tiles offer excellent anti slip properties making them a safe and ideal flooring solution for busy environments.

With a large variety of textures, colours and thicknesses our design tile has a range for every application.

All R-Tile floor tiles are CE accredited and have been successfully installed in many of Europe's leading commercial and retail premises.

The Excel interlocking floor tiles offer a hidden beveled joint which makes them particularly suited to high wear environments

THE CHARTERED INSTITUTE OF BUILDING AUSTRALASIA (CIOB)

181



www.ciob.org

The Chartered Institute of Building is at the heart of a management career in construction.

We are the world's largest and most influential professional body for construction management and leadership. We have a Royal Charter to promote the science and practice of building and construction for the benefit of society, and we've been doing that since 1834. Our members work worldwide in the development, conservation and improvement of the built environment.

We accredit university degrees, educational courses and training. Our professional and vocational qualifications are a mark of the highest levels of competence and professionalism, providing assurance to clients and other professionals procuring built assets.

The CIOB Australasia branch stands at the forefront of the construction industry in this state of continued growth and development.

CIOB Australasia has two committees, both the centre committee and Novus include dedicated and passionate CIOB members, who are committed to providing a range of events to allow for professional development and networking opportunities for members.



@SydneyBuildExpo | #sydneybuild

Our branch charter is to provide progression advice, and encourage our members to become Chartered, as well as to continue working towards promoting construction as a career of choice.

THE TRADIE

100



www.thetradie.com.au

The TRADIE Magazine is a complimentary monthly, full colour, high quality, glossy magazine with editorial content to inform and entertain employers and employees of the Tradie industry, with a particular emphasis on product releases, lifestyle, innovation and industry needs.

The content is suitable for all trades, with 60% of the magazines distributed to a collection of stores where members of each trade frequent. The remaining 40% of magazines make their way to over 300 construction site lunch rooms in Brisbane, Sydney and Melbourne each month.

Put simply, we're Australia's greatest smoko.

TICAR INDUSTRIAL LIMITED

189



www.ticarmetal.com

With over 10 years experience in Aluminum products, we offer high quality aluminum-alloy scaffolds and aluminum storage boxes for buliders. Due to its ight, strong and environmental-friendly feature, more and more contractors prefer them. We have clients in Australia, Western Europe, Singapore and Mld-east area. Our products are produced according to EN1004 and have been testified by European clients. OEM orders are acceptable.

TILT INDUSTRIAL DESIGN

197



www.tiltskylights.com

TILT Skylights & Hatches design and manufacture solutions that go beyond the constraints of traditional skylight systems and opening up opportunities for roof terraces to become seamless extensions of the home and new vistas to be unveiled and maximised. TILT has delivered a vast array of projects, from floor hatches to sliding roofs. Our comprehensive design and development service also extends to a range of construction and industrial products.

TRADEWRAP

167



www.maincom.net

Tradewrap is part of the Maincom Group, established in 1993.

We are the approved Installer for Dr.Shrink the leading International Shrinkwrap Supplier.

Tradewrap provides a supply and installation solution for various markets including:

- Shrink Wrapping for Scaffolding & Construction

A construction site can be a vulnerable place. Whether it's the construction of a new building or renovation/add-on to an existing one, there's the risk of weather eroding all the hard work or ceasing it for a long period of time. For rain entering the structure causing potential damage and loss of time during building projects, Shrink Wrapping provides a high quality solution for the construction sector.

- Shrink Wrapping for Boats/Marine & Recreation

It's waterproof- it can fully encapsulate just about anything and can cover an entire flatbed loads and boats 60'+ boats with one piece

- Shrink Wrapping for Shipping and Transportation

This includes:

- Modular Homes
- Military tanks or helicopters
- Power equipment
- Trains

For specific enquires please contact:

Adrian Morton

Group Business Development Manager

Phone: +61 412 522 476

Email: adrian.morton@maincom.net

UNIBUILD TECHNOLOGY

160



www.unibuild.com

Unibuild is an applied building research company specialising in offsite modular prefabricated projects.

The Unibuild system converts "traditional" design to "modular" design which enables the construction process to engage in maximum offsite prefabrication.

Since 1968 some 400 client projects in Australia and overseas have been designed/constructed using this process.

The Unibuild system has managed to eliminate most "traditional" building materials and

trades in favour of insulated precast panels for floors, walls, roofs and other structural components which are considerably lighter, stronger and cheaper than the norm.

The Unibuild Technology is being offered for sale under license to design and construct practitioners wanting to convert from "traditional" to offsite "modular" construction.

There is also an opportunity for a Company to acquire a Unibuild Technology Master License for worldwide technology transfer.

The Unibuild Technology package available for transfer can be seen at www.unibuild.com.

URBANLINE ARCHITECTURAL

107



Building better choice

www.urbanline.com.au

Urbanline Architectural provides one of the widest selections of building and architectural solutions for residential, commercial buildings and apartments, public facilities and construction projects across Australia.

As a leading supplier of composite, aluminum, hardwood and softwood building products, coupled with acoustic, green star and Group Fire ratings, FSC & PEFC certification, we deliver a new freedom of choice - making it easier to achieve stunning results, with certification that matches your building code requirements and vision. Urbanline is committed to providing eco-friendly choices and incorporating recycled or sustainable building materials where possible.

When you choose Urbanline, you choose direct and easy access to a wide variety of materials through one, reliable supplier and project partner.

VALUEDSHOW MANAGEMENT LLC

163



www.valuedshow.com

Valuedshow Management LLC, affiliated with China Council for the Promotion of International Trade (CCPIT), Fujian Sub-Council, is a leading company in China that offers unique and unparalleled services to Chinese suppliers for their international marketing needs in various tradeshow events around the world.

Through years of hard work and the support of many royal customers, Valuedshow Management has built up a team of experienced specialists that provides professional and satisfactory services in every aspect of a tradeshow event. In vision of "growing through services to our customers and sharing our international experience", Valuedshow Management is committed to make your exhibition experience enjoyable and successful.

VANACHAI GROUP PUBLIC CO.,LTD

157



www.vanachai.com

We, VANACHAI GROUP PUBLIC COMPANY LIMITED, is one of the biggest manufacturer of Particle and MDF board in SEA. Beside these two core products, we also produce the wood-based products such as HDF Laminate flooring & skirts/profiles, HDF finished doors & door skins, Melamine laminated Particle and MDF board, Wall decorative panels, Polyester/ Direct printed Particle and MDF board, ect.

VIBRATION SOLUTIONS PTY LTD

201



www.vibrationsolutions.com.au

Vibration Solutions represent 2 high end European acoustic manufacturers throughout Australia & NZ.

Getzner Werkstoffe are the manufacturers of trademarks Sylomer & Sylodyn, which are engineered polyurethanes that protect buildings and structures from secondary airborne noise & vibrations. AMC Mecanocauchero are a factory based in Northern Spain that manufacture a high end range of acoustic wall, floor and ceiling isolation mounts.

VIEGA

42



www.viega.com.au

Viega is a German advanced engineering company that has become renowned for its revolutionary press-fit piping systems, chosen as the preferred solution for some of the world's most important and significant buildings across the globe.

Viega innovative press-fit piping technology has made building construction and plumbing installation easier, faster and more economical. It has ensured the total reliability of water supply and the highest level of drinking water quality in some of the most demanding conditions imaginable, for sports stadiums, for hospitals, high rise office buildings, and hotels. It has proved itself in an Antarctic research station, for ships, for iconic buildings such as The Pentagon, The Statue of Liberty, Sydney Opera House, Allianz Stadium, Munich and many more.

More recently, Viega has applied the same engineering principles to new fields including pre-wall (concealed cisterns and flush plate) technology that is gathering more first-time patent applications and more design awards.

www.sydneybuildexpo.com/



Today, the Viega name is synonymous with quality and superior technology in over fifty countries. Rest assured, we intend to extend this reputation further, with continual development, new products, and cutting-edge solutions for a wide range of applications.

VIEWPOINT

116



en-au.viewpoint.com

Viewpoint is a provider of innovative construction-specific software solutions to the global construction and capital project industries. Viewpoint creates the tools needed to improve project profitability and visibility, manage risk, and effectively collaborate with the entire project team. For over 35 years Viewpoint has been committed to bringing information technology-based efficiencies to construction projects and their stakeholders, engaging in a highly collaborative process with customers to ensure every product and service addresses key industry issues.

VIZ360

82



www.viz360.com

VIZ360 is a leading provider of Virtual Interactive Tours, Virtual Display Homes, Virtual Showrooms and commercial grade VR and AR applications.

We create, publish and host rich interactive 3D content for builders, architects and product suppliers worldwide, as they move to provide their customers with the ultimate online & offline experiences.

WEATHERTEX

113



www.weathertex.com.au

Australian owned and manufactured with a better than zero carbon footprint and the first global manufacturer to receive Global GreenTag certification. WeatherTex's timber cladding and architectural panels is the ideal solution for any builder, architect or designer in search for environmentally conscious and high quality material. All WeatherTex products are made from, without any chemical additives, certified state forest or private hardwoods in Australia. WeatherTex Weatherboards is guaranteed not to rot, split or crack for 25 years.

Sustainability and durability being at the forefront of all products ensures WeatherTex delivers natural, long lasting, more eco-friendly timber products to customers in

Australia and around the world. WeatherTex's timber product is the only product of its kind in the world, containing absolutely no artificial glues or binders.

WeatherTex, timber made perfect...naturally!

XIAMEN CASASVERDE BUSINESS CO., LTD.

182



www.casaverde.com.cn

Casaverde Stone is invested by Casaverde Industry Group and set up by experienced stone people, who are in stone industry for 10-30 years, to meet the tremendous demands and high quality standard requirements of natural stone products.

Casaverde has been providing quality stone materials and workmanship for years globally. The projects for which we supplied are Hilton Hotels, JW Marriott Dubai, Brighton College and etc. Casaverde is dedicated to continue in the legacy and maintain the highest standard in both quality and customer service. Our reputation depends on it.

XIAMEN CITY YADILONG IMP.& EXP.CO.,LTD.

156



www.ydlgroup.com

A subsidiary company of YDL STONE. We are factory-direct and specialize in manufacturing of quartz countertops and cabinets. Countertops with cabinets combination is our advantages, which enables us to provide high quality product with competitive price.

XIAMEN YADONGLONG IMP.& EXP.CO.,LTD.

148



www.ydlgroup.com

One-source of your natural stone and quartz needs. Our products range from slabs to fabulous stonework for interior and exterior projects. (1) Building materials, (2)Memorial products, (3)Garden landscape (4)Environment stone.

XLAM

143



www.xlam.com.au

Since our inception, XLam has grown to become the leading manufacturer of Cross Laminated Timber (CLT) in the southern hemisphere. Today we are a company providing solutions and services to meet

the changing demands of the construction markets across Australia, New Zealand and beyond.

With an Asia-Pacific focus, XLam operates a network of offices throughout New Zealand and Australia. XLam have two major manufacturing sites (Nelson, New Zealand and Wodonga, Victoria Australia) and are currently working with international partners to establish distribution channels in countries like Singapore. Harnessing our resources across the network enables us to deliver optimal market solutions and services for our customers.

Across our organisation we work hard to attract and keep the very best people in the alternative construction materials business. Our team is committed to knowledge-sharing and continuous improvement. XLam takes a proactive approach to understanding the complexities of each project we engage with.

This is an approach that flows right through the business and represents the way we treat our customers. It has allowed us to develop specialist alternative construction materials capabilities across a range of sectors.

YAO HOO METAL INDUSTRIAL LTD.

202



www.yaohoo.com.tw

Yao Hoo was founded in 1984 . We are a company located in Changhua, Taiwan which consists many kinds of mixing paddle manufacturing.

We are an independent, family-owned enterprise , OEM and respond quickly to customer requests as well as changes in the market.

The qualified technician has over 50 years experience to provide professional service.

We create and build products for who appreciate professional and are willing to know the origin of products they work with.

High Quality and perfect finishing of the products we manufacture and an attractive pricing policy which is focused on stability have remained the essential success factors right from the beginning.





BEE BREEDERS

ARCHITECTURE COMPETITION ORGANISERS

is the leading architecture competition organiser who carries out fully inclusive organisation work for architecture project and architecture ideas competitions.

Our mission is to be the ultimate avenue through which inspiring and innovative design concepts can be generated, expressed and showcased!

Visions and ideas are our products!

why competitions?



Successful Recruitment
and Outsourcing Model

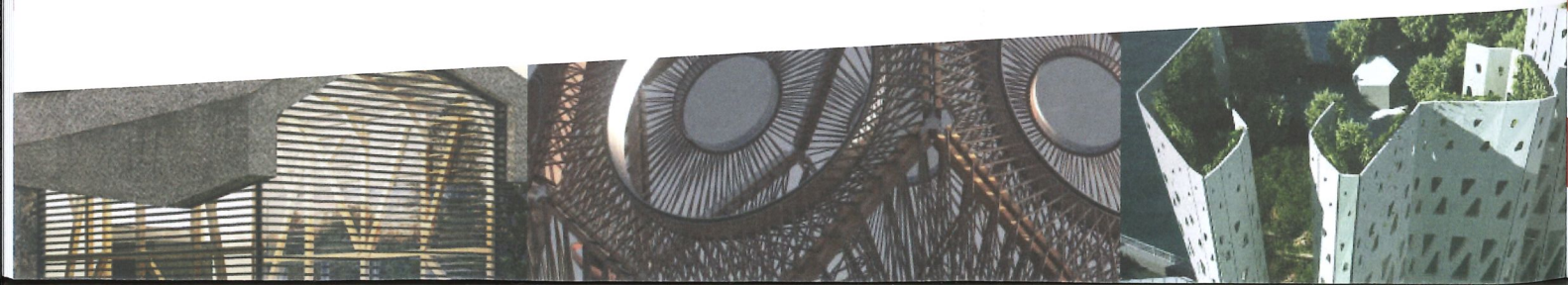


Innovation and High
Impact Creativity



Savings and Modern
Procurement Method

 beebreeders.com / hello@beebreeders.com





bbq school

THE BBQ COOKING SCHOOL

Planning an event at home, in one of our venues or elsewhere? We've got you covered!

We accommodate groups from 20 to 1,020 in Sydney, Melbourne, Brisbane and in the Hunter Valley.

Corporate Events

Get your team fired up and cooking up a storm with the ultimate BBQ Team Event! Break into groups and work together to create a BBQ Masterpiece. A Fun and engaging day with the election of a Masterchef!



Catering Events

We host creative and memorable events, parties and celebrations. Ask for our packages and menus available and designed to ensure you please everyone. More than just the food, we provide equipment, staff and beverages if needed. We always aim at ensuring your event is an outstanding occasion



Group classes

We offer a range of BBQ Courses nationally throughout the year in Sydney, Melbourne, Brisbane and the Hunter Valley. Beer & Smoke / American smoking / Beer & BBQ / Mexican / Seafood BBQ / Tapas... Book one of our class now and become a BBQ Master!



Individual classes

If you really want to become The BBQ Rockstar, book a 1 on 1 session with one of professional and experienced chef!

Trust
and
Value
made
to last

MADE IN SINGAPORE

ALUMINIUM
COMPOSITE
HONEYCOMB
STONEWOOL
PANELS



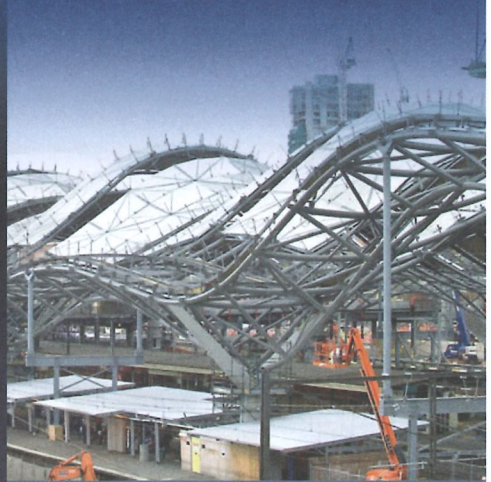
ARCHICOM SINGAPORE PTE LTD E info@archicom-acm.com T 65.65159008 F 65.67950858 www.archicom-acm.com

ArchicomTM
STYLE | DURABILITY | STRENGTH



Global Experience – Local Presence

Our advanced coatings provide protection for major infrastructure projects worldwide



74 Jotun companies represented in more than 80 countries. 40 production facilities globally. Uniform standard of global service.

jotun.com



Maximise water storage in tight spaces

Ideal for residential use, a made to measure steel water tank from Kingspan is tailored to the exact length, width and height needed to maximise water storage capacity. Manufactured from quality AQUAPLATE® steel, available in 4 different shapes and the full range of COLORBOND® colours, a Kingspan made to measure water tank is always the perfect fit.



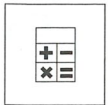
10 year construction warranty /
20 year warranty against corrosion



Australian made using quality Bluescope
AQUAPLATE® Steel



Tanks meet Australian Standard AS4020
for storage of drinking water and carry
watermark certification



Our Size-a-lator allows you to quickly
design a water tank and have it quoted.

Contact a Kingspan expert today:

1300 736 562

sales.au@kingspan.com

kingspanwater.com.au



Kingspan Slimline
Made to measure watertanks



Kingspan

Experts in Rainwater Tanks & Wastewater

COME VISIT US AT STAND
102



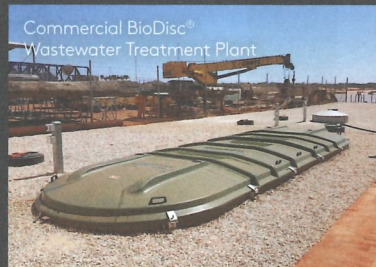
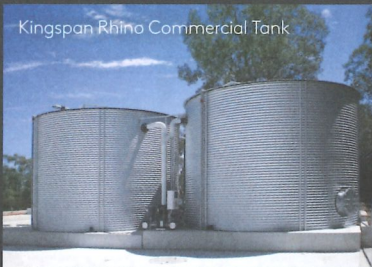
A made to measure steel water tank from Kingspan is tailored to the exact length, width and height needed to maximise water storage capacity. Manufactured from quality *AQUAPLATE® steel, available in 4 different shapes and the full range of COLORBOND® colours.



10 year construction warranty /
20 year warranty against corrosion



Australian made using quality
Bluescope AQUAPLATE® Steel



Tanks meet Australian Standard
AS4020 for storage of drinking
water and carry watermark
certification

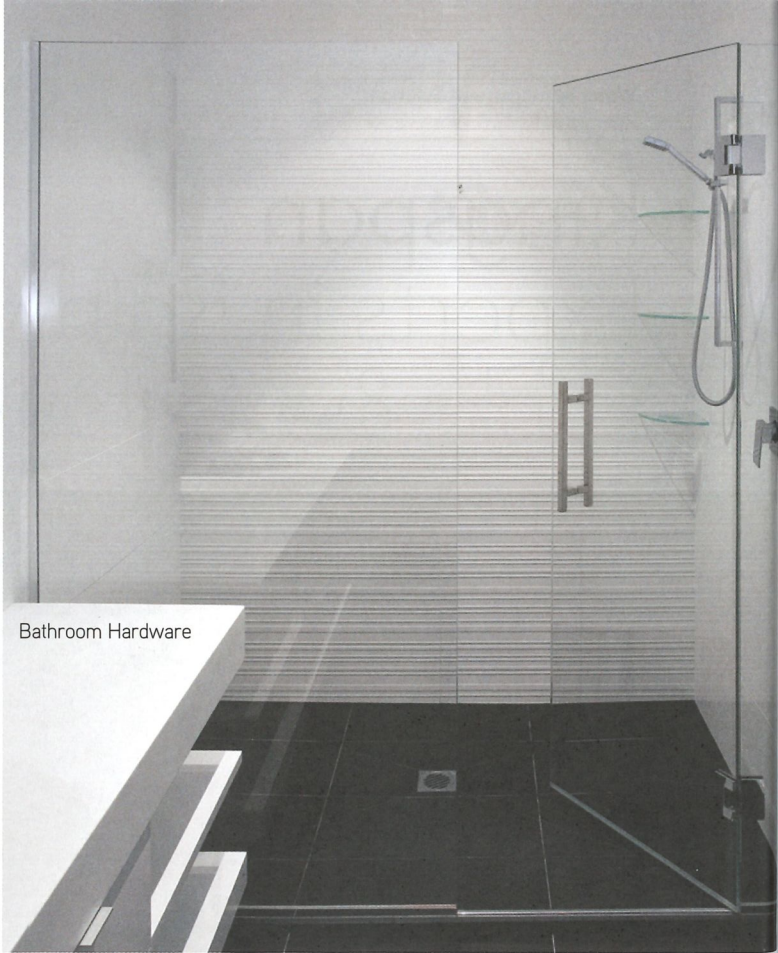
Need a wastewater treatment plant for
your next project? The BioDisc® is a cost
effective and energy efficient solution.

kingspan.com.au/water
1300 736 562 | sales.au@kingspan.com

Kingspan.



Bathroom Hardware



GEZE Perlän

MFGS

MODERN / MANUFACTURED FRAMELESS GLASS SYSTEMS

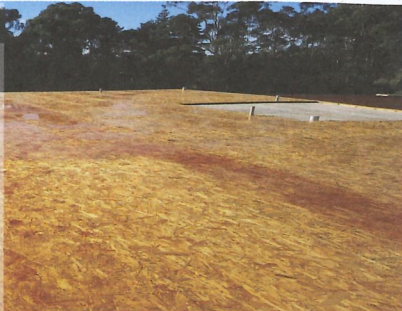
We design, fabricate and supply the highest quality frameless glass hardware for the following applications and more:

- | | | |
|---------------|------------------|--------------|
| Bathrooms | Folding Doors | Balustrades |
| Pivot Doors | Stacking Doors | Pool Fencing |
| Sliding Doors | Canopies/Facades | Pool Gates |

02 9522 3983 | www.mfgs.com.au

OSB SimBoard®

- Ideal for domestic & commercial buildings
- Sheet size 3600 x 900
- 18mm can span 600mm centres
- 15% less weight & 30% less load on site
- Alternative to particleboard flooring
- Formaldehyde free binders
- PEFC & FSC certification on request



OSB SimBrace®

- Durable Structural Bracing
- Environmentally sustainable
- Available in Untreated & H2
- All 6mm in standard sheet sizes
- Designed for the Australian building & construction market



SPOTTED GUM CLADDING

- Australian Hardwood, for Australian conditions
- Durability Class 1 above ground
- Fire Rated to BAL 29
- PEFC + AFS Certified
- Rich in colour
- Environmentally friendly



RADIATA CHAMFER BOARD

- Essential element to your exterior environment
- Radiata Pine sourced from renewable forest
- Radiata Finger Jointed Mouldings
- Pre Primed + H3 LOSP treated
- Set length 5.4
- PEFC + FSC Certified



SPOTTED GUM

- GL18 Laminated Spotted Gum Posts & GL21 Beams
- Available in:
Posts: 90x90, 115x115 & 140x140
- Beams: 140x65, 190x65, 240x65 & 290x65
- Durability Class 1 above Ground
- GLTAA Certified



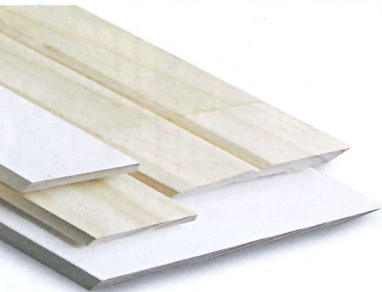
MERBAU

- Independently certified + legally sourced
- Decking, GL Rated FJ Posts, Screening, Beams
- Excellent choice for external + internal exposed applications
- Simmonds employs full-time quality controllers at the sawmill to ensure a high level of product quality in every pack.



MOULDINGS

- Essential element to your interior environment
- Radiata Pine sourced from renewable forest
- Chilean & NZ Radiata Finger Jointed Mouldings
- Available in Untreated, Pre-Primed H3 LOSP & Primed Only
- Full DAR, Standard, Heritage, Skirt & Trim range



...the right choice

The Simmonds Lumber Group is a premier wholesaler of a wide range of timber products for the housing industry, commercial construction, home renovations and industrial markets. Simmonds Lumber is a growing global player in timber and timber-related products. With extensive experience in timber sales and distribution and a team of dedicated import/export professionals, Simmonds Lumber is the right choice for wholesale timber.



MELBOURNE
22 - 32 Nathan Road
Dandenong VIC 3175
Phone: (03) 9791 2241
Fax: (03) 30701 2243

BRISBANE
146 - 164 Buchanan Road
Banyo QLD 4014
Phone: (07) 3267 0244
Fax: (07) 3621 7755

SYDNEY
1 Durham Street
Rosehill NSW 2142
Phone: (02) 9638 7333
Fax: (02) 9684 6466

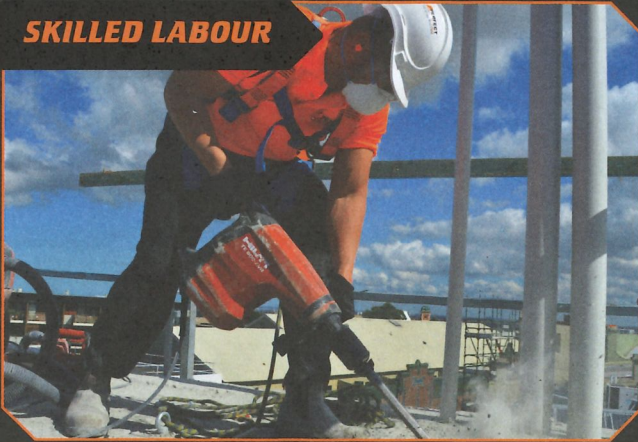
mail@simmondsgroup.com.au

www.simmondslumber.com.au

PERFECT HIRE LABOUR WITH TOOLS

PERFECT HIRE™ is the first company to link skilled labour and equipment hire. Based in Marrickville Sydney, we supply residential, commercial and infrastructure projects across all of NSW

SKILLED LABOUR



OPERATORS



TRADESMEN



QUALITY EQUIPMENT

 **1300 737 332**

 **www.perfecthire.com.au**

SMARTER BUILDING, BETTER LIVING.

Pro9 Global Structural Wall Systems enable:

- Load bearing up to four storeys
- Faster build times
- Class A finish
- Reduced construction costs
- High thermal performance

Build your next home with Pro9 Global

PRO9
G L O B A L



SEE US AT
STAND 92

www.Pro9.com

+61 8 9444 4921 | info@pro9.com

[f /Pro9Global](https://www.facebook.com/Pro9Global) [in /Pro9Global](https://www.linkedin.com/company/Pro9Global) [t @Pro9Global](https://twitter.com/Pro9Global)



**Home automation
products supplier and
solution provider**

* Visit our **Smart Home** demonstration at **stand 66** and ask us about our special offer



Tel: 1300 00 SH 00

Email: info@SmartestHome.com.au

www.SmartestHome.com.au



An Enterprise Level Progress Monitoring & Quality Assurance System



Capture

Capture progress on site with photos, sliders and hold points



Identify

Identify delays early to allow prompt remedies



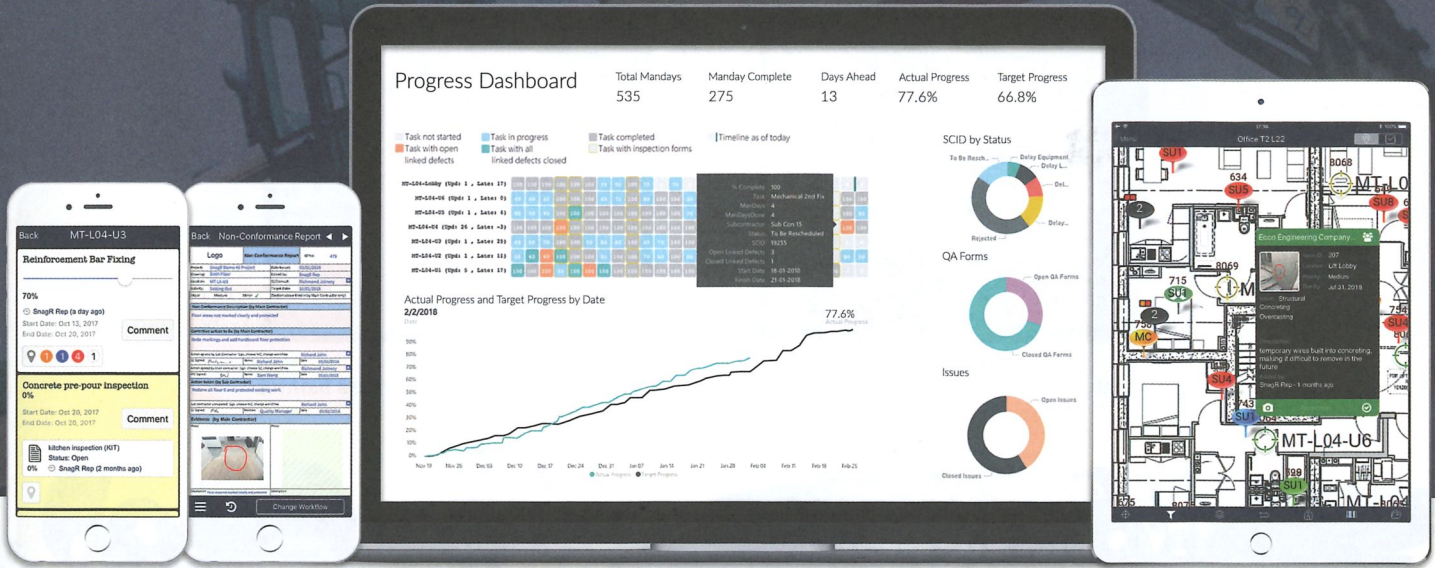
Collaborate

Manage and assign activities to subcontractors, teams, etc.



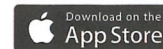
Ensure

Ensure compliance of QA procedures



Register for a demo account to experience SnagR for 30 days.

www.snagr.com.au



BUILDERS!!

FRANCHISES
AVAILABLE

ARE YOU GETTING SCRATCHED OR DAMAGED SURFACES
PREVENTION IS WAY CHEAPER THAN CURE



Window Goop

Peels off easily taking building debris with it



Bench Goop

Saving benchtops from workbench use



Floor Goop

Excellent protection for those expensive floors



Bath Goop

Peels off easily leaving a spotless bathtub

Call a 'Goop' GUY
1300 MR GOOP
6 7 4 6 6 7
www.goopguys.com

Paint Protect Peel



GOOP

Guys

TEMPORARY SURFACE PROTECTION FOR
WINDOW | BENCH | BATH | BLOCKOUT | FLOORS

TEMPORARY SURFACE PROTECTION SPECIALISTS

Goop Guys was created by Shane & Kirstee Copley after recognising a need in the construction industry for an easy to apply, easy to remove temporary protective coating. After seeing & experiencing firsthand how expensive it is to replace damaged & scratched surfaces during the building phase, it was obvious that the old methods of protection were simply not working, hence Goop was born.

Goop Guys started by protecting just external windows and have now extended their product range to protect Windows, Frames, Specialised Hardcoated Glass, Perspex, UPVC Joinery, Benchtops & cupboards, Bathtubs, Stainless Steel, Floorseven Spraybooths and the list goes on.....

Goop is 100% Australian made, exported to numerous other countries and is arguably regarded as the `bees knees` in waterbased peelable coatings. Not a bad effort considering Goop Guys started from humble beginnings on the Sunshine Coast & is proudly Family owned. It was rough starting in the beginning attests Shane Copley - `we had our fair share of trials and tribulations but strived for what we wanted in true Australian fashion & succeeded`.

Not one to blow their own trumpets Shane & Kirstee freely admit that none of this would have been possible without the commitment & input of Quality Building Companies both large and small, to providing their Clients with the best possible finish of their new homes on handover. Goop has since become a `no brainer` for the Builders who use our products and want to proudly show off their business values, it gives them the edge over the competition. It is quite humbling for Shane & Kirstee to drive through new building estates throughout Australia and see Goop posters proudly displayed on the fronts of Quality Focused Builders projects.

So why Goop Products?

Starting from as little as .1% of a building contract it isn't rocket science that Goop is cheap insurance and a worthwhile investment on a building project. It's no secret that Goop is by far the leading product but did you know it is - water-based, non-hazardous, environmentally friendly, non-carcinogenic and does what it says it will do, true claims which have competitors green with envy. Couple that with not having to worry about the Homeowners demanding scratchable surfaces be replaced and it's a no brainer - prevention is far cheaper than cure.

Made by Tradies `For Tradies`.

Call a 'Goop' GUY
1300 MR GOOP
6 7 4 6 6 7
www.goopguys.com

Paint Protect Peel



GOOP Guys

TEMPORARY SURFACE PROTECTION FOR
WINDOW | BENCH | BATH | BLOCKOUT | FLOORS

it's your city . . .



it's our **30 years**
of trusted advice.

Together we can influence our city's successful future.
With solutions to **soundproofing floors**
in multi-residential living.



Regupol Impact Sound and Vibration Solutions

Join us on STAND 130

www.regupol.com.au

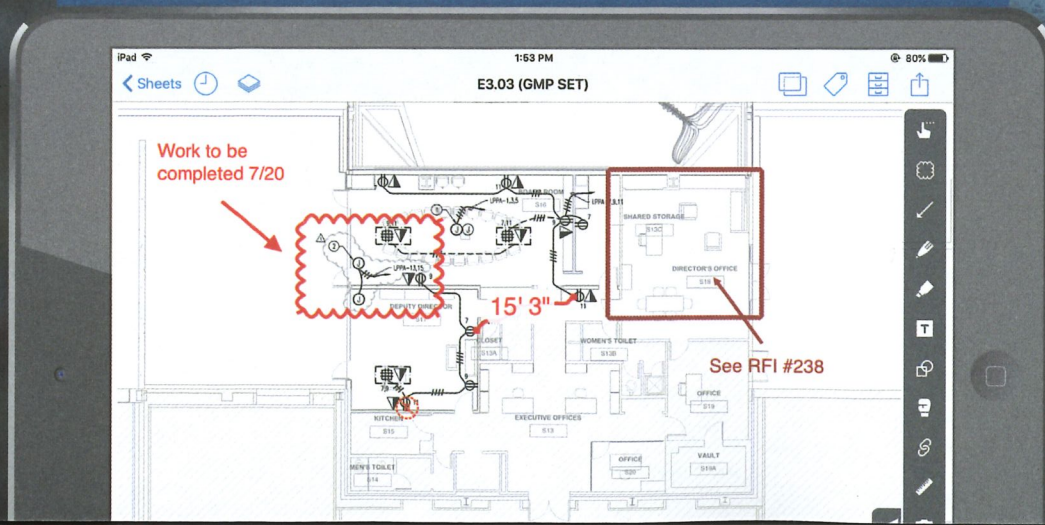


Construction Productivity Software

Build and collaborate from anywhere with real-time access to plans, defect lists, documents and daily reports.

Build better, together.

To get started for free trial, visit: plangrid.com





Stability, longevity, style

Euro Seleкта Clad.

A unique, pre-finished composite product with a beautiful timber-grain embossed surface. Eco-friendly, maintenance free and incredibly easy to install

Building better choice

 **Urbanline**
ARCHITECTURAL

urbanline.com.au | 1300 658 638

Smarter

Faster

Leaner

At Austruss there's nothing we like better than to look at the structure of a building and to develop a way to build it smarter, faster and leaner. If you're thinking about pre-fabrication, or you have a challenging project, come and talk to us.

Austruss.com.au

 **AUSTRUSS**

ONE FACILITY. ALL YOUR PRINTING SOLUTIONS.



CLARKE MURPHY PRINT
EST. 1989



DESIGN



DIGITAL



OFFSET



WIDE
FORMAT

Clarke Murphy Print can cater for all your needs. With design, pre-press, press, finishing, warehousing and despatch all in one facility, we can meet the tightest of deadlines.

We love what we do and our service reflects this. Our team of print enthusiasts consists of fabulous people with an eye for detail and a passion for perfection. Our job is to make yours easier.

Contact us today to discover what we can do for you!

9417 8100 | clarkemurphyprint.com.au | benn@cmprint.com.au or stephanie@cmprint.com.au



SYDNEYELITE

MASSAGETHERAPY

Corporate Wellness • Sports • Remedial Massage

Kogarah • Sydney Olympic Park • Potts Point

We are very confident that our therapists will deliver an extremely high quality of service. Whether it be in one of our clinics, on the sporting field or in your workplace, our team take immense pride in making the client feel and perform better than ever before.

www.sydneyelite.com.au



1300 apprentice

Recruitment
Administration
Apprentice management
TAFE
WH&S
Short term apprentices
Long term apprentices
Out-of-trade apprentices
Labour hire



www.1300apprentice.com.au

p.1300 277 736 or 02 9715 7344

resumes@1300apprentice.com.au

PREFABRICATION SAVES MONEY

A challenge in our industry is identifying ways to reduce material costs and accelerate construction time during the design stage. Because design influences around 75% of the cost and time of a project, designers are looking for fast services that provide cost saving insights.

ADDA helps designers reduce costs by producing a 5D steel reinforcement model. The model identifies steel elements to be prefabricated. Manufacturing off-site means less onsite labour is required, safety risks are minimised and delays due to scheduling and inclement weather are eliminated.

AUSREO developed the BIM application for the Australian construction industry.

It's a 'must have' service for time pressured design engineers and contractors who want to reduce material waste and accelerate construction time.



CALL 1300 AUSREO
TO FIND OUT HOW ADDA
CAN SAVE TIME & MONEY
ON YOUR NEXT PROJECT

ADDA

advanced detailing & design application

VISIT US AT STAND 121

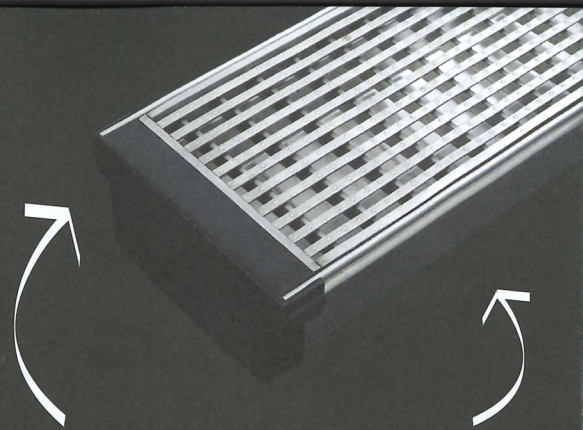
A prefabricated reinforced steel column
designed using ADDA - The Reo BIM

CLICK DRAIN®

Designed by drainage experts, Click Drain® is an innovative and cost-effective full stainless-steel drainage system.

Onsite Fitting • Lightweight
Reduce Transport Costs • Reduce Labour Costs
Quick Delivery • Chemical Resistant
Timeless Material Selection
Self-Supporting

www.auswave.com.au



Revolutionary 'click' together channel lengths & components are orientated on site and cut to suit the application!



BOSS
P A S S I V E F I R E

**LEADERS IN
PASSIVE FIRE**

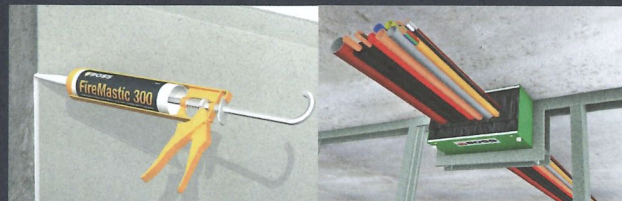
INNOVATORS OF LEADING EDGE FIRE RESISTANT BUILDING PRODUCTS

Construction companies around the world are taking the initiative to install BOSS Fire systems into their projects and are reaping the benefits of their decision.

Developers, building trades and sub-contractors seek technical information that is easy to understand. Thankfully, BOSS's 30+ years of experience offers all customer's reassurance that they are working with the leaders in the field of passive fire.

Developing cost effective systems that eliminate non-compliant

risks and provide solutions to complicated construction applications, BOSS is the preferred choice for passive specialists and general trades alike.



AUS:
1300 502 677
bossfire.com.au

NZ:
0800 768 837
bossfire.co.nz

appa

AUSTRALASIAN PROMOTIONAL PRODUCTS ASSOCIATION



We specialise in supplying quality value for money branded merchandise solutions for businesses.

We offer both Brand Name or Generic product options to suit the following:

- Staff or Client recognition
- Trade Event / Conferences
- Consumer Promotions
- Corporate Golf Days
- Product Launches
- Gift Giving
- Uniforms

Our tailored product solutions will ensure your brand

STANDS OUT FROM THE CROWD



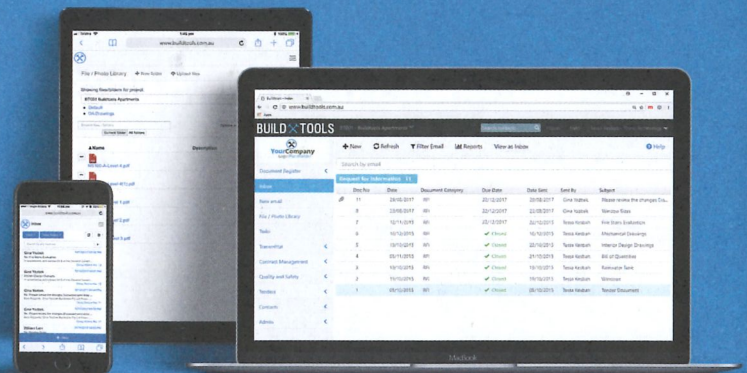
PLEASE CONTACT US TODAY

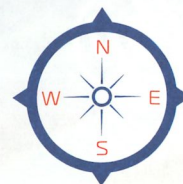
David Freeman +61 450 737 357
P.O Box 157, Vaucluse NSW 2030
david@brandsinmotion.net.au
www.brandsinmotion.net.au
ABN:77 144 521 915

BUILD TOOLS

Automate tendering, document control, project management, communication and more.

www.buildtools.com.au





C&A SURVEYORS

Efficient. Economical. Essential.

Suite 3, Level 4
460 Church Street
Parramatta NSW 2150
02 9630 9299

info@candasurveyors.com.au
www.candasurveyors.com.au/sydbuild



FLOOREX PRODUCTS

1800 356 673
Australia-Wide

Come and meet
Australia's complete
supplier of concrete
preparation
equipment!

Specially for:
Bricklaying
Concrete Grinding
Tiling
Floor Preparation
Carpet Layers
Flooring Shops
Concrete Polishing

Floor Grinders & Polishers

Concrete Grinding
Made Easy



Effective Dust Control

Floor Scrapers

Remove Floor
Coverings with
Grunt!



Mortar Mixing Equipment

Look After Your
Lungs



Mix your Cement
and Mortar Fast &
Efficiently



**We welcome
you to Stand
129**



HP DesignJet

ACCELERATE YOUR BUSINESS

Discover boundless collaboration with
HP DesignJet Printers.

Sydney Build 2018 | Stand No 38
Contact hpdesignjets.au@hp.com for a live demonstration



Print

Print with
HP DesignJet quality
and reliability



Scan

Protect your
originals with
Smart Scanning



Copy

Retain precise
lines and
colors



Share

Track and
record all
project changes

GENERAL CONTRACTING INDUSTRY OUTLOOK

CURIOUS ABOUT THE INDUSTRY OUTLOOK FOR THE NEXT 12 MONTHS?

Uncover unique insights into the ever-changing world of the general contractor. Explore business outlook, predicted future costs, as well as forecasted sales and revenue.

DOWNLOAD THE EXCLUSIVE SURVEY REPORT TO LEARN MORE ABOUT:

- ▷ The current state of the general contracting industry and its overall trajectory.
- ▷ Tips, tricks and best practices from successful general contractors of all sizes.
- ▷ Strategies for controlling costs and maximizing revenue.
- ▷ Unique insight into how the general contracting industry compares to other industries.
- ▷ ...and more!

DOWNLOAD

this report to see where your
business stands compared
to other general
contractors.



try.jonasconstruction.com/GCbuild



PREMIER
CONSTRUCTION SOFTWARE

VISIT US AT BOOTH #115

Trusted sewage treatment solution for commercial wastewater projects

Benefits of the BioDisc® commercial sewage treatment plant include:

- Unique Rotating Biological Contactor Technology for proven optimal performance at all times
- Noise-free and odourless operation
- Fully removable lid for easy de-sludging
- Minimal service and maintenance levels required
- Control panel / alarm supplied as standard, for peace of mind
- Delivered directly to site

For a trusted sewage treatment solution contact

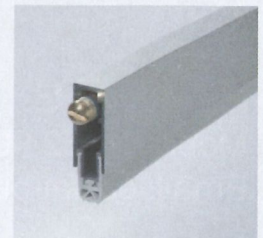
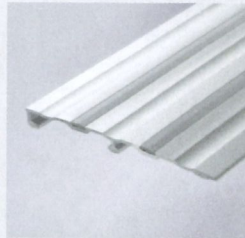
1300 736 562

| sales.au@kingspan.com

| kingspan.com/au/water



Acoustic, smoke and fire containment systems –
designed and fully tested for residential, commercial
and public buildings.



TESTED, TRUSTED SOLUTIONS

Residential Air Conditioning Solutions

Split Systems | Multi-Split Systems | Ducted Systems

Commercial Air Conditioning & Hot Water Solutions

Split Systems | Multi-Split Systems | Ducted Systems
Ceiling Cassettes | VRF Systems | Air to Water Heating

SUPERIOR TECHNOLOGY THAT
OUTLASTS AND OUTPERFORMS



AIR CONDITIONING

WINNER[®]
OAKFAIR INDUSTRIAL CO., LTD

Product conformity: AS/NZS1892.1

Ms. Alena He
Mobile: +852 90665355
Email: oakfairbusiness@vip.126.com

Address: RM.1403, 14/F., S U P TOWER, 75-83
KING, S ROAD, NORTH POINT, HONG KONG.
Website: www.oakfairladder.com





We Simply Do It Better

Phone: 1800 697 655
Email: sales@ozroll.com.au

Come and see
us at stand

184

Rollashield®

elipso™

acryloc®

RENDER – TEXTURE – PAINT – EXTERNAL BLINDS – ROLLER SHUTTERS – LOUVRES



DISCOVER OUR RANGE

- FASTENING
- AIRTIGHTNESS AND WATERPROOFING
- SOUNDPROOFING
- FALL PROTECTION
- TOOLS AND MACHINES

Rothoblaas is the multinational Italian company that has made of innovative technology its mission, making its way to the forefront of technology for wooden buildings and construction safety in just a few years.

COME TO VISIT US AT STAND 126

rothoblaas

Solutions for Building Technology



The most popular water filter in Japan
Built-in Water Filter Tap

takagi

ON - OFF

With just one touch, choose between tap water or filtered water

5 layered filter removes chlorine and contaminants

	1	2	3	4	5
Tap Water	Strainer	Activated carbon	Ion exchanger	Antibacterial ceramic	Micro-filter
Minerals					✓
Soluble lead					✓
Free chlorine					✓
Small particles					✓
Musty odours					✓
Pesticides					✓

4 Antibacterial ceramic
Inhibits bacterial growth inside the cartridge. If used daily, there is no need to run the tap before using it as drinking water.

2 Activated carbon-ion exchanger
3 Removes chlorine soluble lead etc.

Filter cartridge

1 Strainer
Removes small particles.

5 Micro filter
Removes small particles.

Clean water with minerals left intact

Meet us at booth #142 and try it for yourself.
www.takagiwater.com.au

2-year Warranty
will be granted when you register in our website.

Subscription service
Automatic delivery of cartridges every 4 months.

3 easy steps
to replace the filter cartridge

INTRODUCING
THE REVOLUTIONARY
R-TILE

R-Tile is the most amazing revolution to hit the Australian flooring scene since concrete!

Tek Tile
AUSTRALIA



1300 66 22 14
www.briancummins.com.au
www.everythingretail.com.au

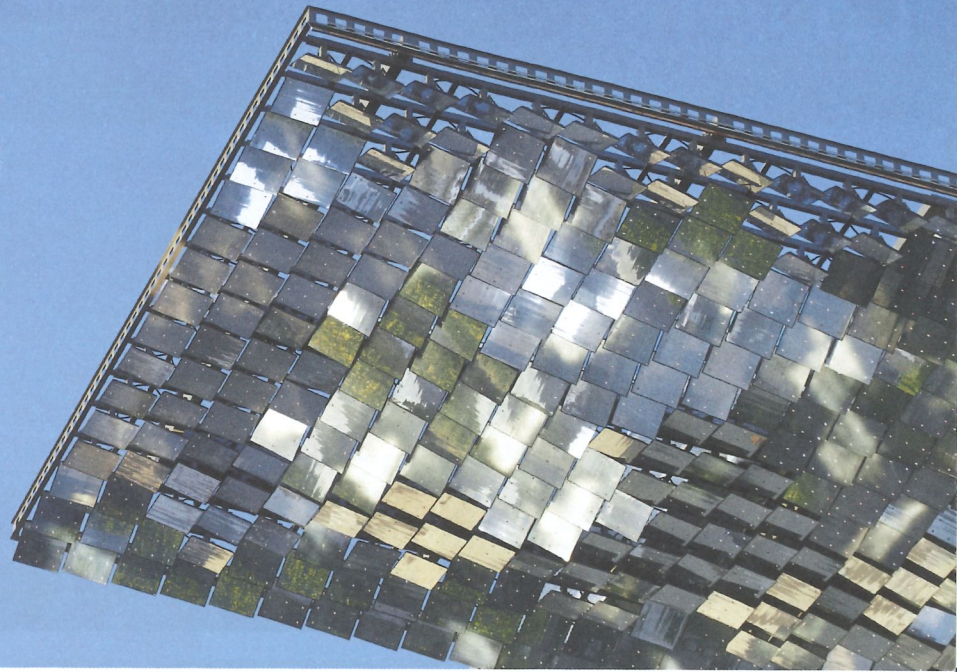


TILT

Australia's leading industrial designer for architects.

- Operable architecture
- Custom architecture
- Skylights & hatches
- Custom products
- Heliostat reflector technology
- Public art

Visit us at Stand #197
tilt-industrialdesign.com



A PROJECT AT THE END OF THE WORLD.

And a piping system that supplies all of the essentials right from the get-go.

Viega. Connected in quality.

Bharati Research Station, Antarctica

viega.com.au/About-us

viega



weathertex

timber made perfect, naturally

Cladding | Panels | Weatherboards

Order FREE Online samples - weathertex.com.au

VOTED No. 1
MOST TRUSTED
BRAND



Photo: Darrin



Think differently

XLam Cross Laminated Timber is currently listed on the 'Declare' Living Future Institute product database, visit www.living-future.org/declare

www.xlam.co.nz | www.xlam.com.au





SOFTWARE WITH
INTEGRATION BUILT
IN, NOT BOLTED ON.

If there is one thing this industry needs less of, it's complexity. That's why solutions from Viewpoint are built for seamless integration across platforms. Rather than software add-ons that communicate poorly, we provide smooth workflows and centralized information for complete visibility and control. It's time to simplify your solution.

Viewpoint.com.au | 02 9492 4100



© 2018 Viewpoint, Inc. All rights reserved.

ELEVATE YOUR CORPORATE EVENT

INDOOR SKYDIVING

Take your team to
new heights and FLY!

FROM

\$87.50 pp.

CATERING AND CONFERENCE
ROOM AVAILABLE



 **iFLY**
DOWNUNDER

BOOK NOW: 1300 366 364 | IFLY.COM.AU



**Come and see a Live
Demonstration at Stand 90!**

GEOPLAST

MODULAR PLASTIC FORMWORK SYSTEMS

The ideal Formwork
solution for small to
medium size projects.



LIGHT WEIGHT

All components are easily
handled quickly by one person
without cranes and lifting
devices.



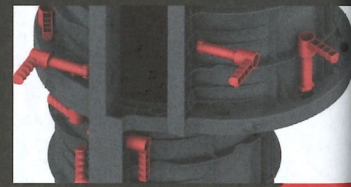
FAST

Modular, tool free assembly
allows incredibly fast set up.



EASY TO USE

Components can be assembled
by unskilled labour, reducing the
need for skilled carpenters



CONTACT US TODAY for more information:

P: 03 9839 7055 E: sales@allcongroup.com.au www.allcongroup.com.au

BESTATE

**Factory direct
Formwork &
Scaffolding
Specialist**

Stand 88

bestateau@gmail.com

SUMMER

SPRING KITCHEN &
BATH PRODUCTS PTY LTD



TEL:02 97486662

[Http://www.spring-tap.com.au](http://www.spring-tap.com.au)

E-mail:infospringtap@gmail.com

Unit 3 68-72 Derby Street Silverwater NSW 2128



RODNEY STEVENS ACOUSTICS

Acoustic Consultants
Member Australian Acoustical Society

Rodney Stevens Acoustics is an acoustic consultancy firm providing environmental noise assessments and solutions Australia wide. Being a team, we understand the importance of client communication throughout the entire engineering process.

In addition to performing the necessary measuring and analysis while conducting acoustic assessments, we provide bespoke acoustic solutions to meet the needs of each individual client.

Rodney Stevens himself is a recognised specialist in acoustics and in his tenure has solved acoustic problems for individuals, businesses and major companies since 1975.

Rodney Stevens Acoustics specializes in Acoustic reports for Councils, Building Industry and Hospitality.

PO Box 522

Wahroonga NSW 2076

P 02 9943 5057

F 02 9475 1019

mail@rodneystevensacoustics.com.au

ABN 78 149 311 455

rodneystevensacoustics.com.au

PRIZES

Attendees of Sydney Build Expo 2018 will have the chance to win the prizes listed below.

HOW TO PARTICIPATE?

All you have to do is fill in the feedback form and put it in the Lucky Draw Box before 3:30 p.m. on March 15th and March 16th. The winners will be announced in the conference area at the closing of each conference day.

DAY 1 PRIZES

IFly Indoor Skydiving

2 first time flyer vouchers

Wet'n'Wild

2 passes to Wet'n'Wild Sydney waterpark

Paintball Booking Office

10 tickets to paintball

Cool Hard Hats

5 cool hard hats

Harbourside Cruises

2 double passes to Vivd Sydney Cruise

Sydney Elite Massage Therapy

5 \$50 vouchers for massage therapy

BBQ School

1 double pass

DAY 2 PRIZES

IFly Indoor Skydiving

1 first time flyer vouchers

Wet'n'Wild

2 passes to Wet'n'Wild Sydney waterpark

Cool Hard Hats

5 cool hard hats

Ultimate Paintball

Paintball prize pack

Sydney Elite Massage Therapy

5 \$50 vouchers for massage therapy

BBQ School

1 double pass



—BODEGA 1994—
WINE STORE



HARBOURSIDECRUISES



IFLY
INDOOR SKYDIVING



SYDNEYELITE
MASSAGETHERAPY



ULTIMATE
PAINTBALL

Wet'n'Wild
Sydney

Paintball PaintballBookingOffice.com

SUBSCRIPTION DISCOUNT ON AUSTRALIA'S #1 DIY MAGAZINE HANDYMAN

Handyman is Australia's number 1 DIY magazine and is dedicated to showing readers how to improve their home and garden with step-by-step projects, expert advice and clever ideas.

Each issue features a range of projects for every part of the home, including building, renovating, decorating, outdoor living and gardening, as well as DIY tips, recipes and kid's projects.

To advertise in our Handyman magazine, please contact Alek Jovanoski on 02 9004 4461 or email alek.jov@handyman.net.au

SUBSCRIBE to Australia's favourite DIY magazine

- ✓ Save up to **45% OFF** the cover price – 11 issue subscription for **just \$39**
- ✓ **FREE** delivery to your door
- ✓ **EVERY ISSUE** is packed with step-by-step projects for indoors, hints and tips to fix things yourself, the latest design trends, and **MUCH MORE!**

GO TO: www.handyman.net.au/subscribe

Handyman



SUBSCRIBE NOW !!!

FOR ONLY \$39

(45% off the cover price – 11 issues)



Please note: Winners **MUST** be in the exhibition hall, or be able to return to the hall (if they have left) in order to collect the prize. If you cannot commit to this, your prize will go to the next winner of the lucky draw. Incomplete entry forms will be removed before the draw.

***PLEASE MAKE SURE YOU READ THE FULL TERMS AND CONDITIONS OF THE PRIZES, ALL OF WHICH CAN BE FOUND BELOW.**

Terms and Conditions :

- This lucky draw is open to professionals at the show, excluding Oliver Kinross staff members, university students and related prize suppliers.
- Only fully completed feedback forms will be placed into the draw. Forms with missing details will be removed.
- Any incomplete, illegible or photocopied entries will be disqualified.
- Only one form will be accepted per person. If more than one form is found to be submitted by one person then this person will be disqualified from the lucky draw.
- All winners must be present to claim their prizes at the specified times of the giveaways.
- All unclaimed prizes will be forfeited.
- Oliver Kinross/ Prize Sponsors reserve the right to amend the terms and conditions without giving prior notice.

An aerial photograph of Sydney, Australia, showing a dense urban skyline with numerous skyscrapers and modern buildings. In the foreground, a large green park area with winding paths and trees is visible, situated next to a body of water. The Sydney Opera House is partially visible on the right side of the park. The overall scene is a mix of urban development and green space.

**OLIVER
KINROSS**

■ **OPERATIONS**

Alice Chan
Operations Manager
alice.chan@oliverkinross.com

■ **PRESS & MEDIA**

Asia Pacific Marketing
marketing@aucklandbuildexpo.com

■ **SALES**

James Mckenzie
Head of Oliver Kinross Asia Pacific
james.mckenzie@oliverkinross.com