



# Autodesk Revit and the Power of Data

---

## Proactive Model Management





## Holger de Groot

National Director of BIM, MArch, PGDipArch

Since 2017: HDR, Australia

2015 - 2017: Grimshaw Architects, Australia

2010 - 2015: HDR TMK and SSP, Germany

2001 - 2010: Various Positions in the AEC Industry

As National Director of BIM for the Australian region, my role is to **supervise and guide** Digital Practice Leaders at HDR. I am responsible for **implementing** and advising leadership on the corporate Digital Practice **BIM Strategy**, interacting with **various disciplines** and advising on BIM matters at all levels.





## Mehdi Blanchard

Associate Technology Innovation Specialist

Since 2011: HDR, Australia

2003 - 2011: Graphisoft Australia / Central Innovation

1998 - 2002: Cap Gemini

As a Technology Innovation Specialist, my role is to **assess** new technologies and find **creative** ways to implement them in our workflow. I also research, design and develop **custom software solutions** for HDR globally.



# HDR

## Profile

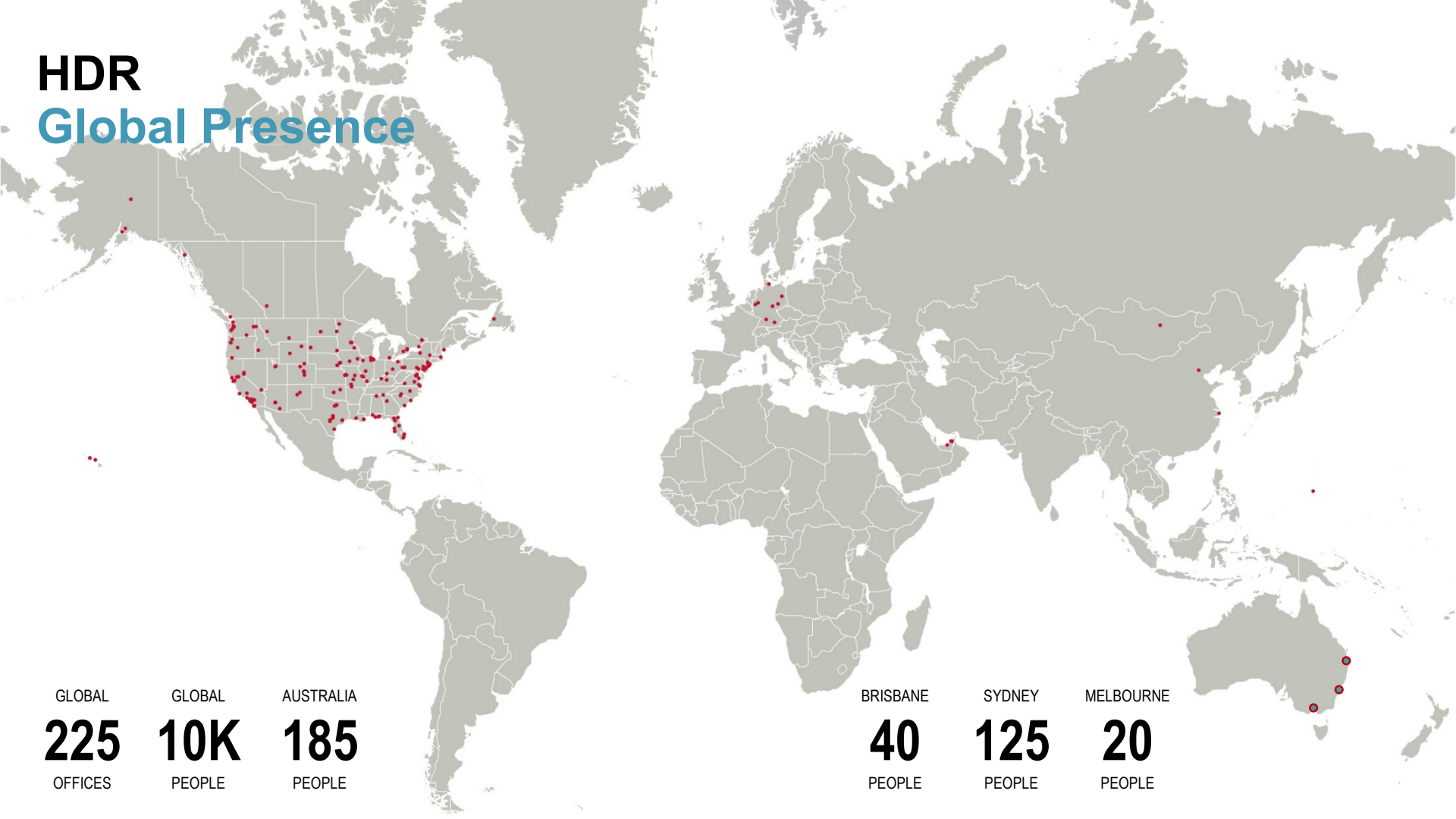
HDR is a creative firm for architecture and engineering with experience spanning over 40 years in the Australian market. With more than 10,000 employees in 225 offices worldwide, we have access to highly informed best practice, innovative future-thinking and top talent from around the world, allowing us to contribute world-class intellect, expertise and specialist knowledge to our projects.

**HEALTH  
COMMERCIAL  
DEFENCE + GOVN'T  
RETAIL + MIXED USE  
+ URBAN LIVING  
EDUCATION, SCIENCE +  
TECHNOLOGY**



# HDR

## Global Presence



GLOBAL	GLOBAL	AUSTRALIA
<b>225</b>	<b>10K</b>	<b>185</b>
OFFICES	PEOPLE	PEOPLE

BRISBANE	SYDNEY	MELBOURNE
<b>40</b>	<b>125</b>	<b>20</b>
PEOPLE	PEOPLE	PEOPLE



# Autodesk Revit and the Power of Data

## Proactive Model Management



### Quality Assurance



Key Performance Indicators

### Infrastructure & Collecting Data



Microsoft Excel, Dynamo & Macros

### Visualising & Optimising



Microsoft PowerBI, Autodesk Revit & D3



# Autodesk Revit and the Power of Data

## Proactive Model Management



Autodesk Revit support and training to build up a high level of user knowledge **needs time**.



Issues arising from inexperienced users in models and **Revit's inability to provide feedback**, hence further hindering learning.



It was time to develop something for our project teams that is a little bit more **flexible and easy to access**.





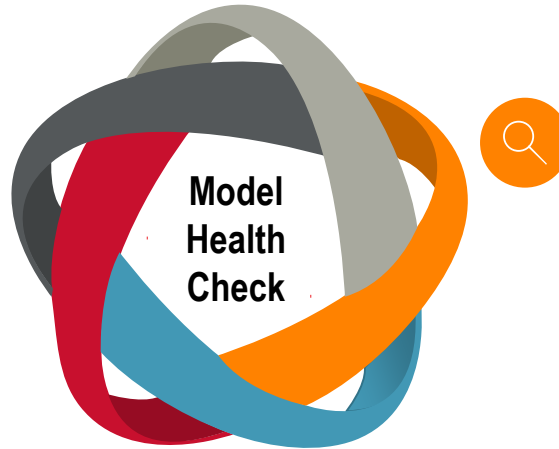
# **Quality Assurance**

Key Performance Indicators



# Quality Assurance

## Step One



### Defining KPIs

- › Key Performance Indicators allow us to measure and discuss what we are trying to improve.

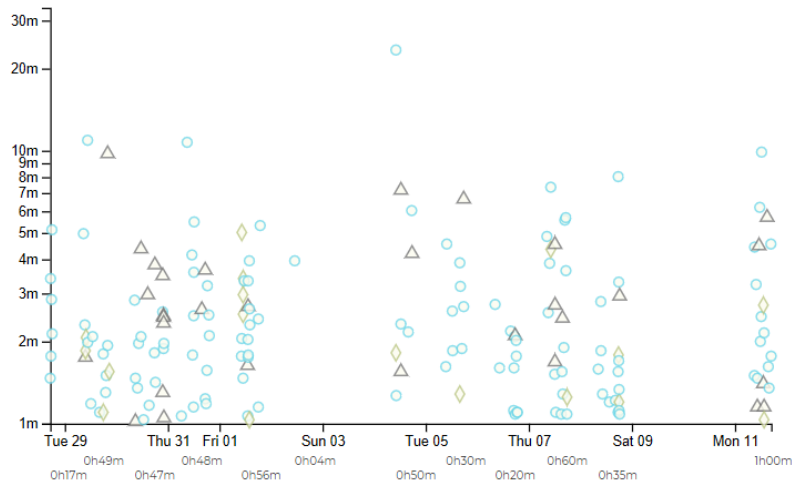


# Quality Assurance

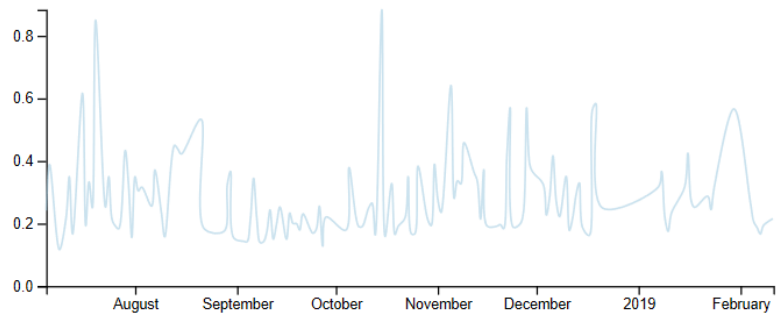
## Key Performance Indicators

Performance

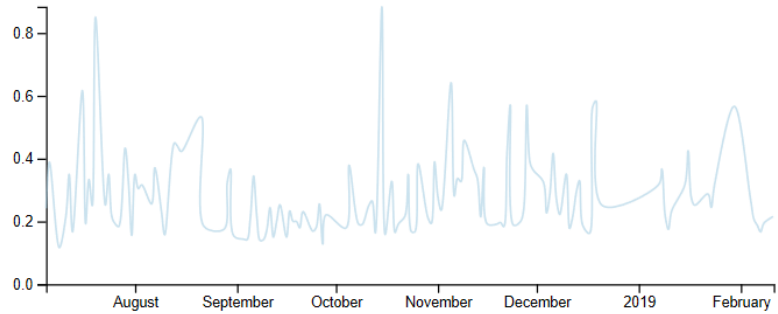
- Opening
- ◆ Synchronizing
- ▲ Printing



Avg Opening Time (min)



Avg Synch Time (min)





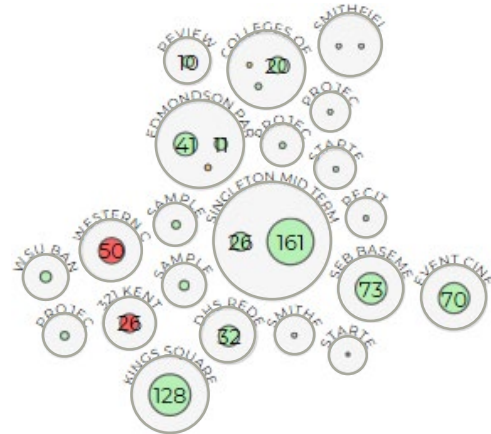
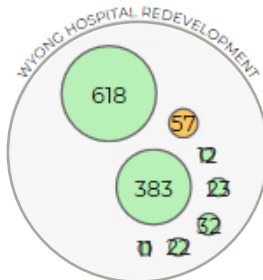
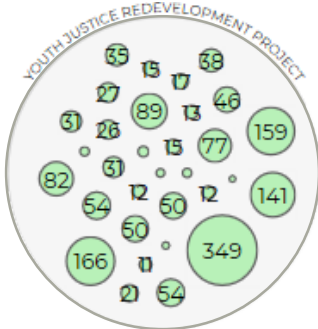
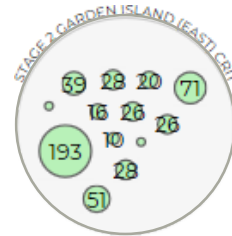
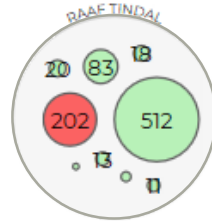
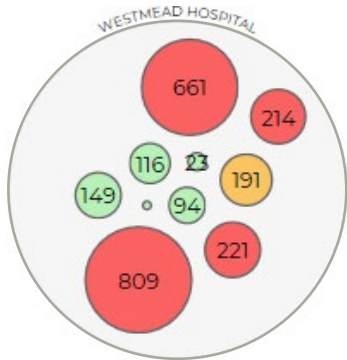
## Key Performance Indicators



- Opening
- Synchronizing
- Printing



- X < 300 MB
- 300 MB < X < 400MB
- X > 400 MB





# Quality Assurance

## Key Performance Indicators

### Performance



- Opening
- Synchronizing
- Printing

### Model Size

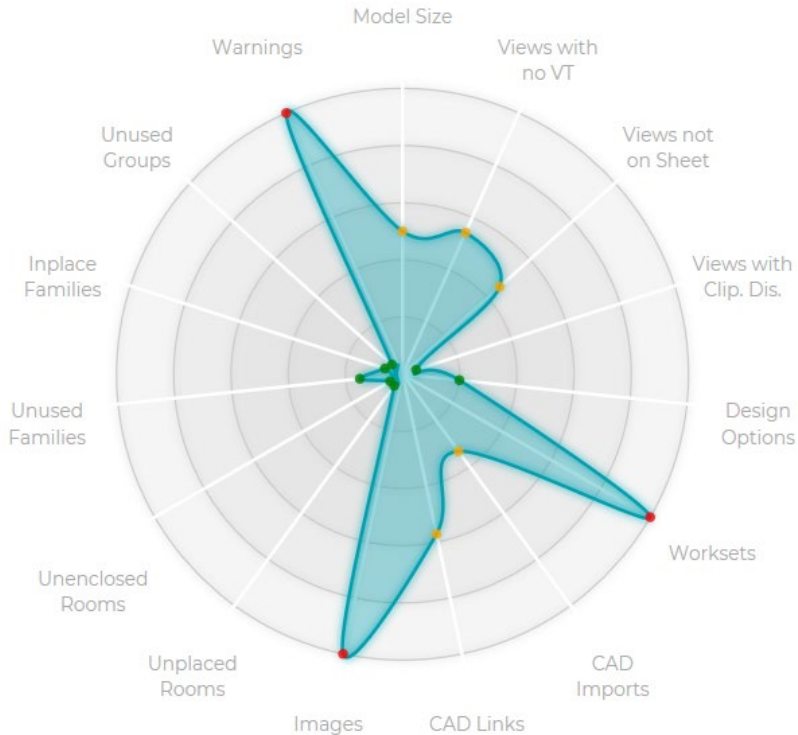


- X < 300 MB
- 300 MB < X < 401 MB
- X > 400 MB

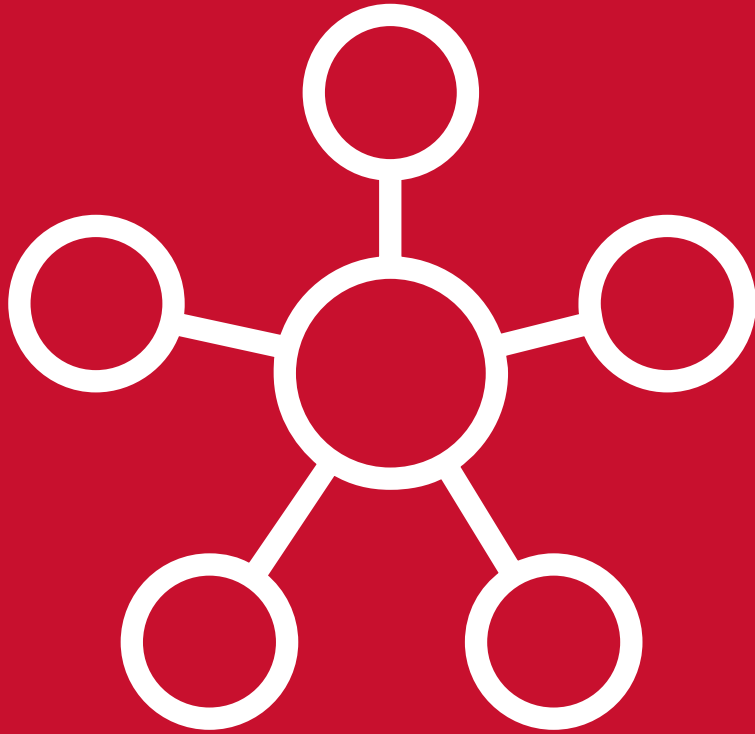
### File Data



- ▲ Warnings
- ▲ Unused Groups + Families
- ▲ In-place Families
- ▲ Unenclosed + Unplaced Rooms
- ▲ CAD Links + Imports + Images
- ▲ Views with no View Template
- ▲ Views not on Sheet
- ▲ Views with Clipping Disabled
- ▲ Design Options + Worksets







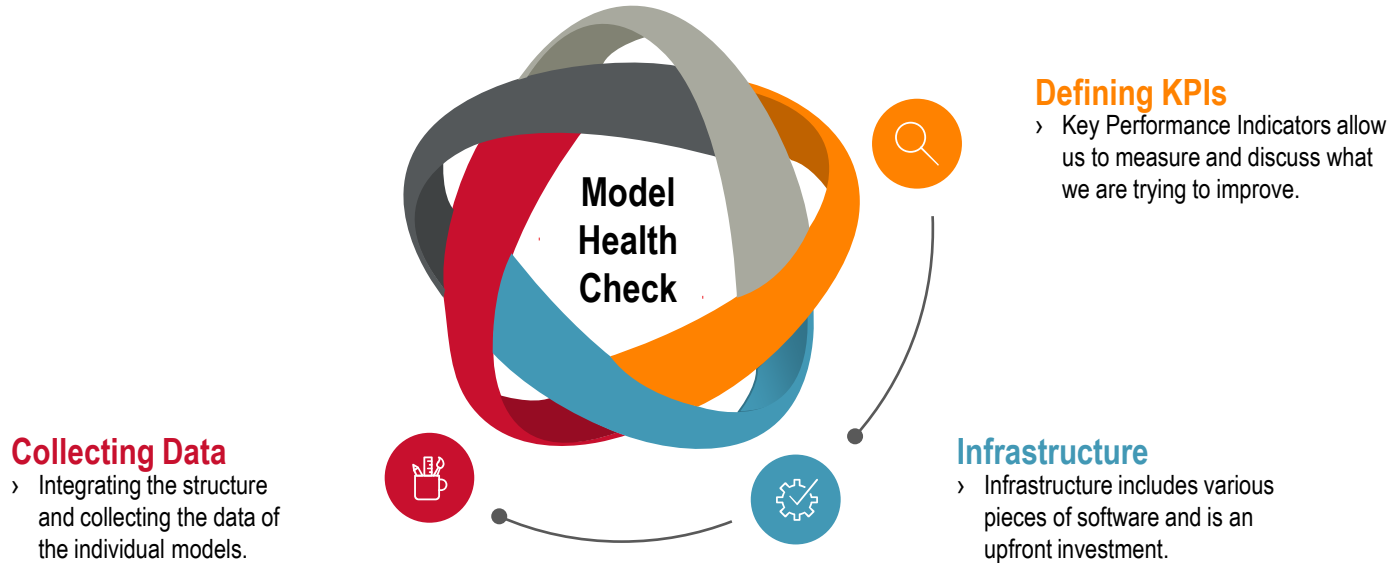
## **Infrastructure & Collecting Data**

Microsoft Excel, Dynamo & Macros



# Infrastructure & Collecting Data

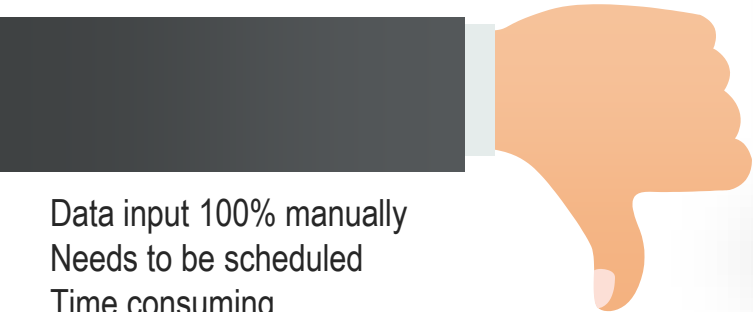
## Step Two & Three





# Infrastructure & Collecting Data

## Microsoft Excel



Data input 100% manually  
Needs to be scheduled  
Time consuming

**INTERNAL REVIT QUALITY AUDIT CHECKLIST** HDR

Project Name:		File Name:	Auditees Name:
Project Number:		Audit Date:	Auditors Name:
Activity		Result C, I, N	Comments [C = Complies, I = Improve, N = Noncomplying]

<p>1. <b><u>BIM FOLDER / FILE STRUCTURE &amp; PROJECT SETUP</u></b></p> <p>1.1. Admin:</p> <p>1.1.1. When was the BIM file set-up, by whom and which version of Revit is being used?</p> <p>1.1.2. Is the project required to be a 3D BIM deliverable?</p> <p>1.1.3. Has the BIM Management Plan been produced?</p> <p>1.2. Setup:</p> <p>1.2.1. Has a Project Template been created?</p> <p><b><u>BIM FOLDER / FILE STRUCTURE &amp; PROJECT SETUP (continued)</u></b></p> <p>1.2.2. Is the Site file separated from the Building file(s) ?</p> <p>1.2.3. Have Coordinates (Easting and Northings) been established?</p> <p>1.2.4. Has True North and Project North been defined?</p> <p>1.2.5. Has a structural grid been setup using the correct tool?</p> <p>1.2.6. Have the Revit files been named in accordance with HDR naming conventions, saved as Central files and filed correctly?</p> <p>1.3. Folder Structure:</p> <p>1.3.1. Is the Project Library folder structure in effect and the source file contain the correct information and renamed to include the project number?</p>	
--	--

REVISION 2Page 1 of 6DATE: 19.06.2017



# Infrastructure & Collecting Data

## Dynamo



Data input partly automated

Does not start automatically  
Dynamo version control needed  
Warnings via HTML (Revit 2017)

Model Health Review				None Printing Column	
Project Name BLDG 3613 RENOVATION		Color Code Manual User Input		HDR	
Project Number 1007317					
Model Name (Link) 1007317-A-CENTRAL_BLDG_Renov2017.rvt		Color Code Automated Script Input			
Date & Time 8/20/17 8:41 AM					
Next Approv. Review Date 9/14/2017					
Revit Version 2017					
Team Build No. 2017111_1100x46					
Reviewed By BORONE					
Model Size (MB) 56		Model size is acceptable (Below 400MB)		Notes & Instruction	
Issues to Check		Results	Assessment	Comments & Considerations	
Total Model Warnings	No. of Warnings	42	Action Required: Reduce warnings to improve model performance and minimize risk of model corruption. Total number of warnings exceed 1/3 of the model size in MB.	Maximum Acceptable	19
Copy/Monitor Warnings	No. of Coordination Review Warnings	0	Good! No Action Required	NOTE: Only include copy/monitored items such as Levels, Grids, Floors, etc.	Model Manager or BIM Manager: manually input the total number of model warnings into cell B53 if NOT Automatically populated. Others otherwise noted in this column, when is populated by the Dynamo Script
Model Groups		8	Good! No Action Required	NOTE: As a general rule we should limit groups because they do a lot to increase model size. Avoid creating groups when they are not needed.	Model Manager or BIM Manager: How many Coordination Review Warnings are associated with ANY Revit Link? Input number in cell B55. NOTE: This is NOT referring to Link Instances
Worksets		0	Good! No Action Required	Worksets should not be used like AutoCAD layers	Model Manager or BIM Manager: Please limit use of Model Groups as they increase the model size exponentially. Check your groups for instances of 1 or less. If there is only 1 or 2 a group is not necessary.
Elements are on the proper Worksets		Yes	Good! No Action Required	Consider having a 3D view for each Workset for easy checking, we have a Dynamo Script to create those for you automatically.	Model Manager or BIM Manager: There are 26 Standard HDR Worksets, use caution when creating more, they may not easily be needed.
Phase naming is consistent with other models		Yes	Good! No Action Required	The Project team should make sure of Phase names are consistent with all models, and remember, Name is NOT a Phase.	Model Manager or BIM Manager: Open a 3D view or 3D Standard views to Workset Check view and turn on "Worksharing Display: Worksets". Review objects to validate if they are on the correct worksets. Select "Yes" or "No" in cell B57 based on what you find.
Design Options naming is consistent in all models when applicable		Yes or N/A	Good! No Action Required	Design Options can be tricky and used when inappropriate, please consider where you are using them.	Model Manager or BIM Manager: Review phases (Phases - Phases in Project Phase tab) in all models and delete in cell B58 if differences exist between project models. If differences, talk to team and make notes in cell B58 if they are to stay and why. If staying, check phase mapping of linked files.
Level names are consistent with other models		Yes	Good! No Action Required	The Project team should make sure all Level names are consistent with all models.	Model Manager or BIM Manager: review phases (Phases - Phases in Project Phase tab) in all models and delete in cell B58 if differences exist between project models. If differences, talk to team and make notes in cell B58 if they are to stay and why. If staying, check phase mapping of linked files.
DWG Links		0	Good! No Action Required	The use of AutoCAD links is sometimes unavoidable, they can cause problems and are not intelligent. Limit their use.	Model Manager or BIM Manager: Review primary level names and group conventions for consistency across all project model files. Denote results in cell B60.
DWG Imports		0	Good! No Action Required	IMPORTING rather than linking AutoCAD can cause corruption and severely increases the model size, do not IMPORT DWG files.	Automated Script Input
Images in Model		2	Good! No Action Required	You and increase number of images used in the model to keep the file size down. If images are required, please try and reduce the image file size. Try not to exceed 4 images.	Automated Script Input
Percentage of Schedules NOT on Sheets		31%	Good! No Action Required	While working Schedules are Gantt Schedules are an integral part of our modeling efforts, keeping the schedules not on sheets to DPR or before is what we are trying to stay at.	Automated Script Input



# Infrastructure & Collecting Data

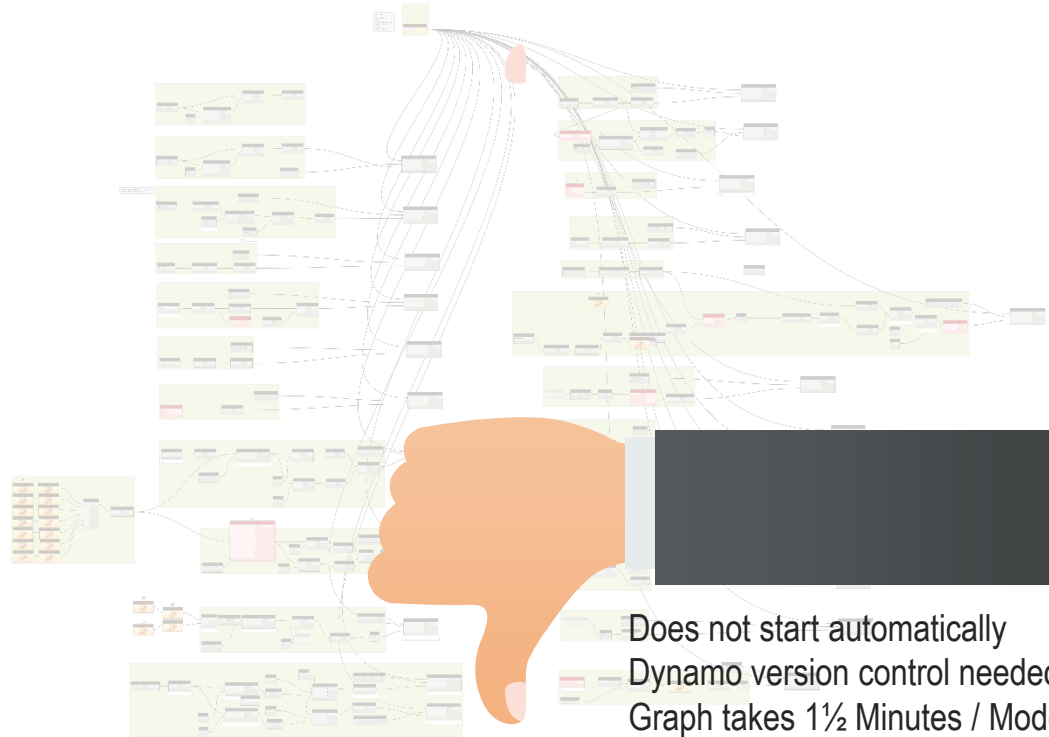
## Dynamo



83%

MODEL DATA - HEALTH ASSESSMENT				
MODEL SIZE	GROUP INSTANCES	GROUP TYPES	UNUSED GROUPS	
388	168	27	0	
LINK / IMPORT DATA				
DESIGN OPTIONS	WORKSETS	CAD IMPORTS	CAD LINKS	IMAGES
8	24	0	5	25
ROOM DATA				
AREA OF ROOMS	ROOMS	UNPLACED ROOMS	UNENCLOSED ROOMS	
3566	115	4	0	
FAMILY DATA				
LOADED FAMILIES	UNUSED FAMILIES(%)	INPLACE FAMILIES	WARNING COUNT	
654	14 *	116	239	
VIEW DATA				
TOTAL VIEWS	TOTAL SHEETS	VIEWS WITH NO VT	VIEWS NOT ON SHEET	CLIPPING DISABLED
763	313	77	77	0

Warnings directly available  
Data input 100% automated



Does not start automatically  
Dynamo version control needed  
Graph takes 1½ Minutes / Model



# Infrastructure & Collecting Data

## Macros



8.6

MODEL HEALTH ASSESSMENT				
MODEL SIZE	GROUP INSTANCES	GROUP TYPES	UNUSED GROUPS	
25	24	4	0	
LINK / IMPORT DATA				
DESIGN OPTIONS	WORKSETS	CAD IMPORTS	CAD LINKS	IMAGES
0	12	0	1	1
ROOM DATA				
AREA OF ROOMS	ROOMS	UNPLACED ROOMS	UNENCLOSED ROOMS	
35	6	1	0	
FAMILY DATA				
LOADED FAMILIES	UNUSED FAMILIES(%)	INPLACE FAMILIES	WARNING COUNT	
105	34 N1	0	4	
VIEW DATA				
TOTAL VIEWS	TOTAL SHEETS	VIEWS WITH NO VT	VIEWS NOT ON SHEET	CLIPPING DISABLED
88	32	10 N2	36 N2	0

Status: 11/02/19 3:00:24 PM

Starts automatically  
Data input 100% automated



```
string ACTIVITY_FOLDER = "RevitActivity";
string WARNINGS_FOLDER = "RevitWarnings";
char ACTIVITY_FILE_SEP = '@';
DateTime idlingStartTime;

int INTERVAL_BETWEEN_AUDIT = 4; //Hours

private void Module_Startup(object sender, EventArgs e)
{
    this.Application.DocumentsSaved += new EventHandler<DocumentSavedEventArgs>(Application_DocumentSaved);
    this.Application.DocumentsSynchronizedWithCentral += new EventHandler<DocumentSynchronizedWithCentralEventArgs>(Application_DocumentSynchronized);
    this.Application.DocumentsSynchronizingWithCentral += new EventHandler<DocumentSynchronizingWithCentralEventArgs>(Application_DocumentSynchronizing);
    this.Application.DocumentOpening += new EventHandler<DocumentOpeningEventArgs>(Application_DocumentOpening);
    this.Application.DocumentOpened += new EventHandler<DocumentOpenedEventArgs>(Application_DocumentOpened);
    this.Application.DocumentPrinting += new EventHandler<DocumentPrintingEventArgs>(Application_DocumentPrinting);
    this.Application.DocumentPrinted += new EventHandler<DocumentPrintedEventArgs>(Application_DocumentPrinted);
}

private void Module_Shutdown(object sender, EventArgs e)
{
    this.Application.DocumentsClosed += new EventHandler<DocumentClosedEventArgs>(Application_DocumentClosed);
    this.Application.DocumentsClosedWithCentral += new EventHandler<DocumentClosedWithCentralEventArgs>(Application_DocumentClosedWithCentral);
    this.Application.DocumentsClosedWithoutCentral += new EventHandler<DocumentClosedWithoutCentralEventArgs>(Application_DocumentClosedWithoutCentral);
    this.Application.DocumentsClosedWithoutCentral += new EventHandler<DocumentClosedWithoutCentralEventArgs>(Application_DocumentClosedWithoutCentral);
    this.Idling += new EventHandler<IdlingEventArgs>(Application_Idling);
}

// Revit Macros generated code
public void Unused_PlaceHolder
{
    // This is just to keep an
}

void Application_DocumentSynch
startActivity(e.Document.F

void Application_DocumentSynch
endActivity(e.Document.Pat

// Auditing Now if needed
startAudit(e.Document);
}

void Application_DocumentOpen
startActivity(e.PathName,

void Application_DocumentOpen
endActivity(e.Document.Pat

void Application_DocumentPrinting(object sender, DocumentPrintingEventArgs e) {
startActivity(e.Document.PathName, "PRINT", true);
}
```

Macro Manager

Application Project1

Macros in this application are enabled.

Macros	Language	Description
HDRAudit	C#	

Run Edit Step Into Create Module Macro Description Delete Close Help





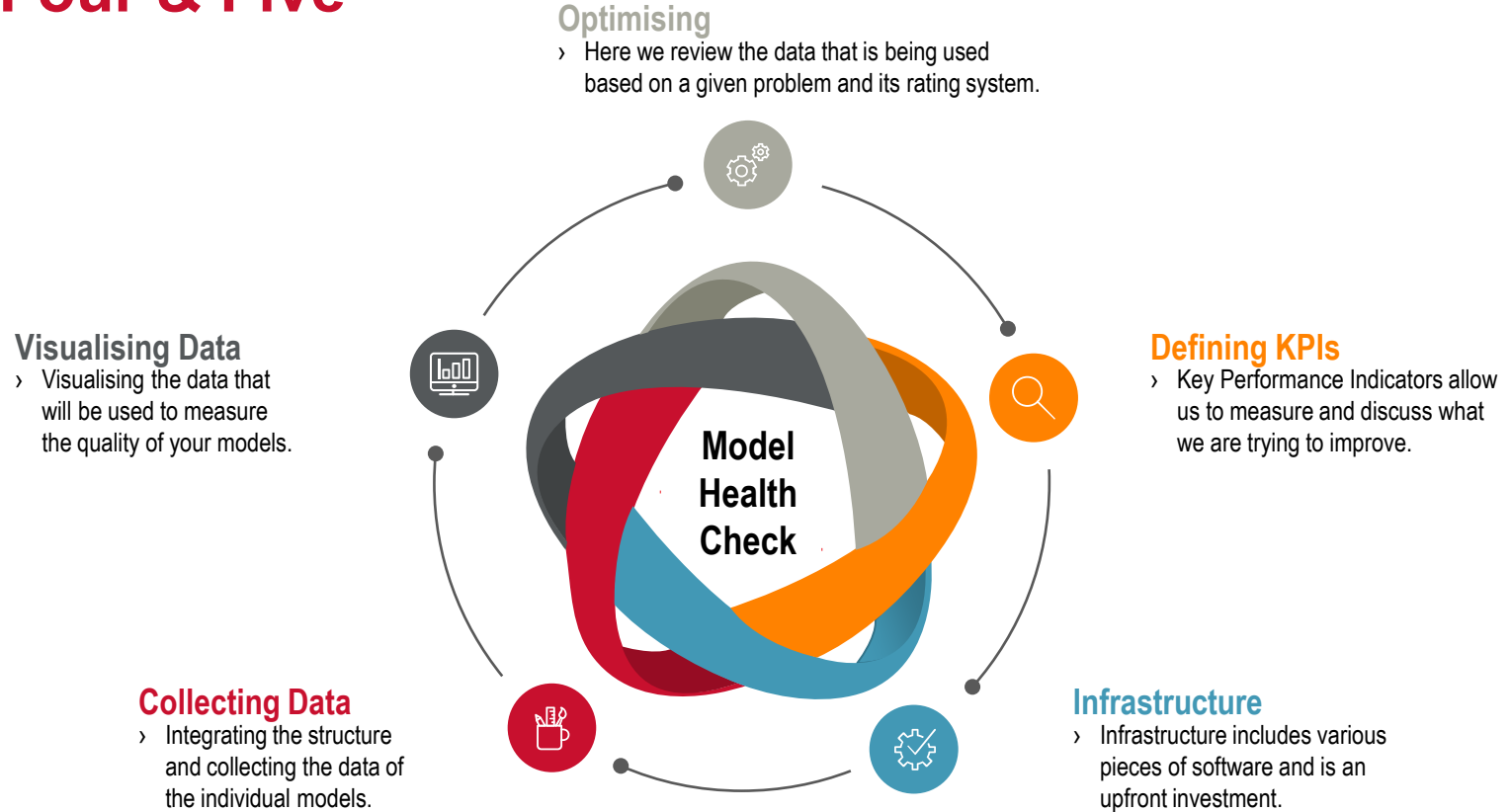
## **Visualising & Optimising**

Microsoft PowerBI, Autodesk Revit & D3



# Visualising & Optimising

## Step Four & Five





# Visualising & Optimising Autodesk Revit



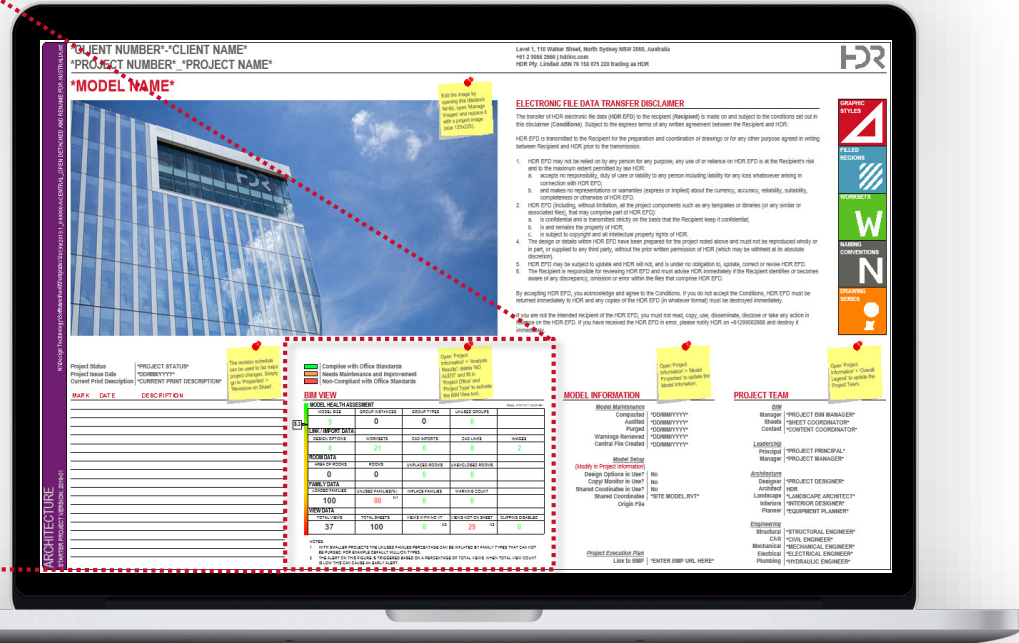
- Complies with Office Standards
- Needs Maintenance and Improvement
- Non-Compliant with Office Standards

## BIM VIEW

MODEL HEALTH ASSESSMENT					
	MODEL SIZE	GROUP INSTANCES	GROUP TYPES	UNUSED GROUPS	
8.3	9	0	0	0	
LINK / IMPORT DATA					
	DESIGN OPTIONS	WORKSETS	CAD IMPORTS	CAD LINKS	IMAGES
	0	21	0	0	2
ROOM DATA					
	AREA OF ROOMS	ROOMS	UNPLACED ROOMS	UNENCLOSED ROOMS	
	0	0	0	0	
FAMILY DATA					
	LOADED FAMILIES	UNUSED FAMILIES(%)	INPLACE FAMILIES	WARNING COUNT	
	100	80 N1	0	0	
VIEW DATA					
	TOTAL VIEWS	TOTAL SHEETS	VIEWS WITH NO VT	VIEWS NOT ON SHEET	CLIPPING DISABLED
	37	100	0 N2	29 N2	0

### NOTES:

- WITH SMALLER PROJECTS THE UNUSED FAMILIES PERCENTAGE CAN BE INFLATED BY FAMILY TYPES THAT CAN NOT BE PURGED. FOR EXAMPLE DEFAULT MULLION TYPES.
- THE ALERT ON THIS FIGURE IS TRIGGERED BASED ON A PERCENTAGE OF TOTAL VIEWS. WHEN TOTAL VIEW COUNT IS LOW THIS CAN CAUSE AN EARLY ALERT.





# Visualising & Optimising Microsoft PowerBI



Allows comparability



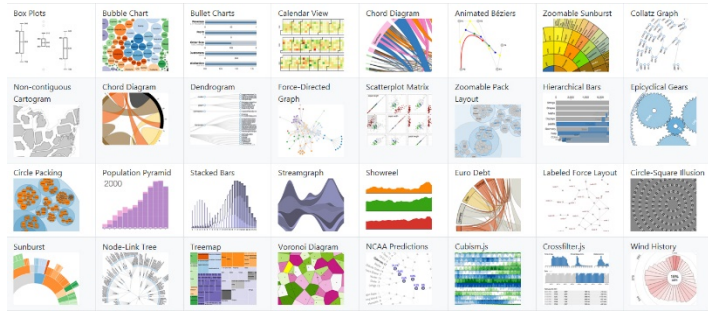
License costs  
Compatibility issues  
Needs training and support





# Visualising & Optimising

## D3 - Data-Driven Document



Allows comparability  
No additional license costs  
Clear and easy to understand







## **Lesson Learned**

Proactive Model Management



# Lesson Learned

## Proactive Model Management

- ◆ As a team, model health is **everyone's responsibility**.
- ◆ Project model metrics **shall be visible to every team member**.
- ◆ BIM Managers shall keep an eye on the metrics so they **know who to help**.







Thank you.



Level 1, 110 Walker Street  
North Sydney NSW 2060 Australia  
T: +61 2 9956 2666 D: +61 2 99562622  
E: [holger.degroot@hdrinc.com](mailto:holger.degroot@hdrinc.com)

